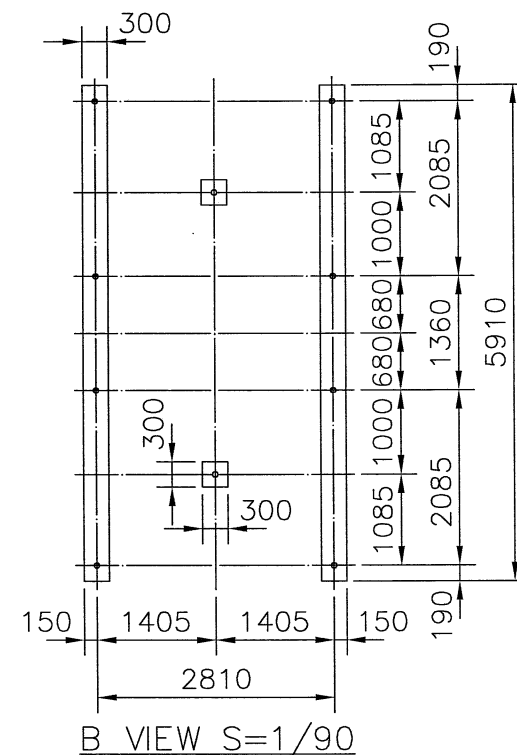


Figure 1 consists of two parts. The left part is a cross-section labeled 'A-A SECTION' showing a concrete foundation with a height of 300 and a width of 40. It includes a label 'W1/2"X40支, 基礎螺栓 W1/2"X40PCS, ANCHOR BOLT'. The right part is a top view of the air inlet grid, labeled 'B', showing a grid of 10 by 10 cells with dimensions 17160 by 5910. It includes a label '入風口面 AIR INLET' and a section line 'A-A'.

5.(*)設計基礎台高度,可依主管管徑調整高度.

5. (*) THE DESIGN OF FOUNDATION HEIGHT CAN BE ADJUSTED
ACCORDING TO THE DIAMETER OF MAINPIPE. 102-

B-SAS-700-C3.DWG



C5-2-33