

良機

1962創業

Cooling Tower

Series

LCTR

LIANG CHI INDUSTRY CO., LTD.

多功能冷却塔性能測試場
COOLING TOWER TEST LABORATORY PER C.T.I.

Liang Chi Series LCTR cooling towers have been designed for cross flow type with Low Noise Motor and Fan. The compact design is suitable for Equipment Cooling, Industrial Process Cooling and Air Conditioning.



Thermal Performance certified by the Cooling Technology Institute (CTI) in accordance with CTI STD-201

Characteristics

Design of Integrated System

Liang chi low noise cross flow rectangular type of series LCTR cooling towers have been designed according to the international standards. The light weight structure and standardized components of LCTR tower feature easy transport, lifting and site installation.

Low Noise & Easy Maintenance

Series LCTR cooling tower use high tension V-belt reducers, which are corresponding to the low noise axial flow fans featuring silent operation and easy maintenance.

Light Weight, Less Space and Multi-Cell Installation

Comparing with other types of cooling tower, LCTR features lighter operational weight and less installation space. Also the combinative multi-cell structure is suitable for large cooling requirement and future expansion.

Unique Distribution System & Efficient Heat Exchange

Gravitational distribution systems features low pressure and slow water flow which can prolong cooling duration and ensure cooling efficiency.

High Efficiency Distribution System

Gravitational distribution systems with spray nozzles feature low pressure and slow water flow which can prolong cooling duration and ensure cooling efficiency.

Efficient Performance

Unique design of vacuum-formed & round-chorded filling with ripple surface facilitate even spread & long duration of water drop and free of deposits & scales.

Low Electrical Power Consumption

The high efficient hydrodynamic "venturi-tube" fan stack with high efficient low-resistance filling facilitates good ventilation and reduction of fan motor power to save electrical power.

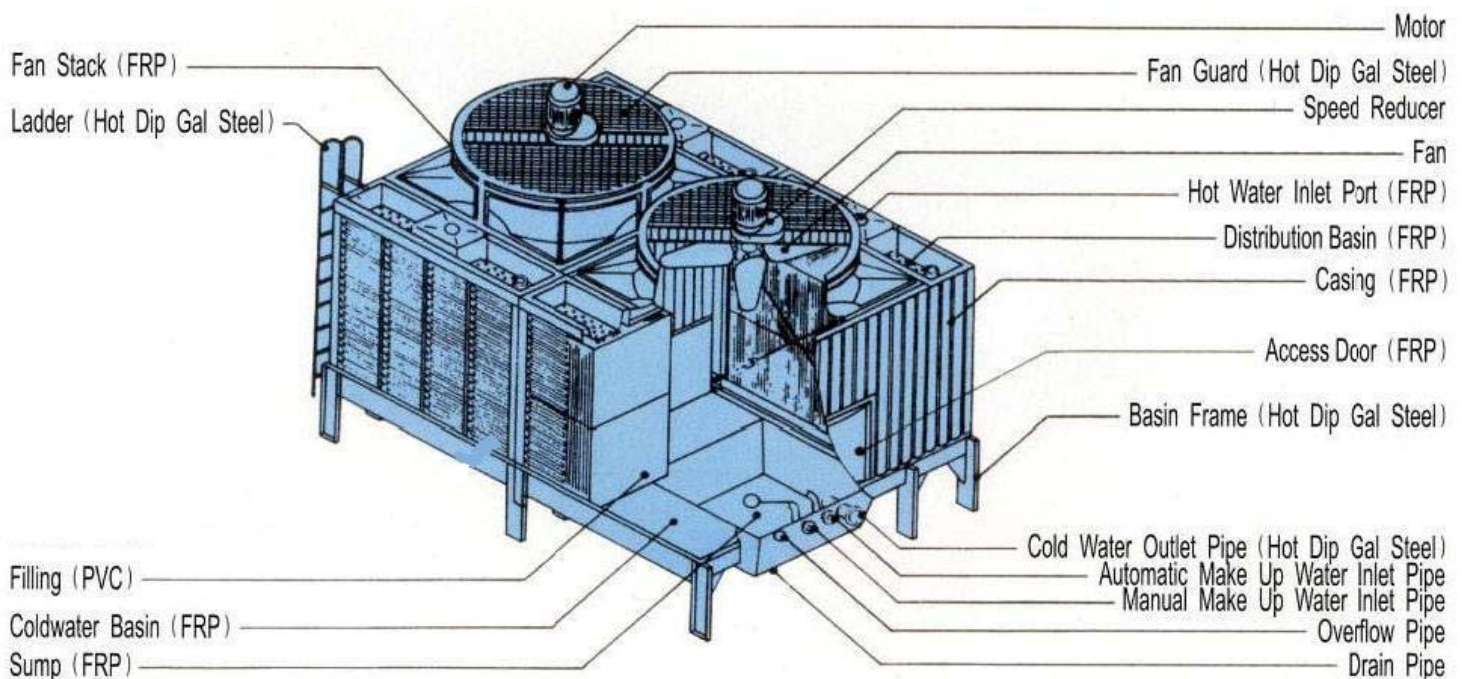
Durableness & Low Maintenance Cost

LCTR tower components are made of weather-proof and anti-corrosive materials. Casing, Fan stack, basin and access-door are made by F.R.P. Filling are by P.V.C. Supporting rack is by light weight steel. All the steel parts are hot-dip-galvanized so as to enable the durableness and low cost.

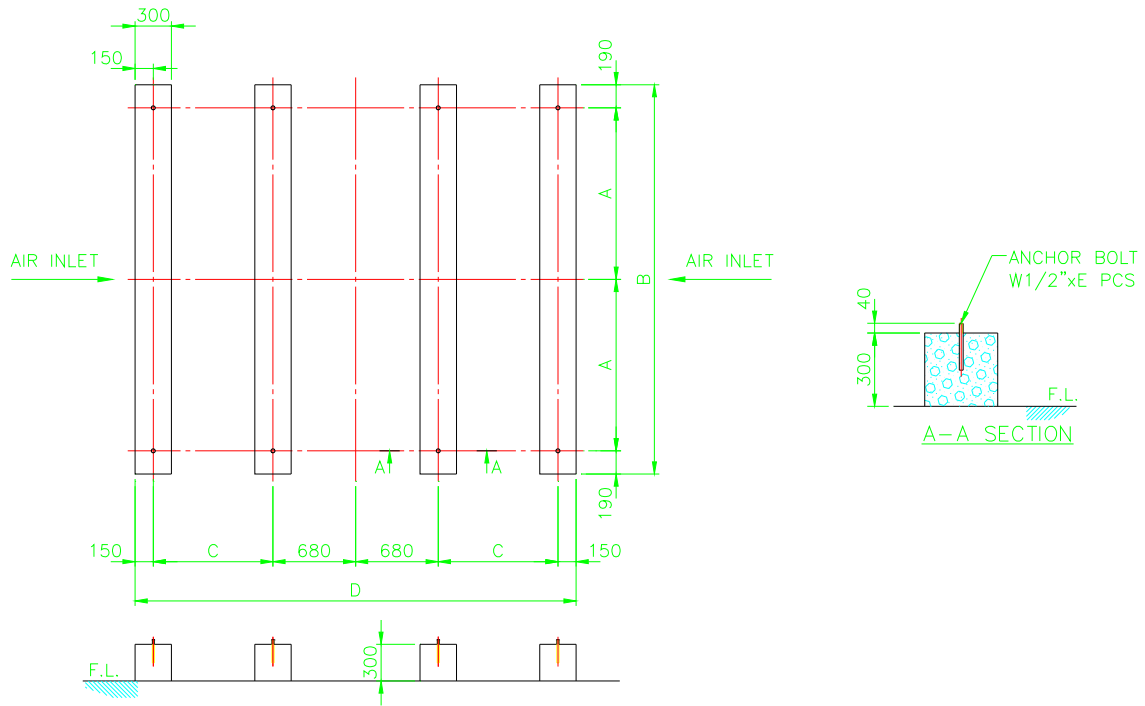
Easy Piping Work & Low Installation Cost

All the piping connections are gathered on basin except inlet pipe connection which lies over the distribution basin for easy piping.

Structure and Standard Materials



Recommended Concrete Foundations

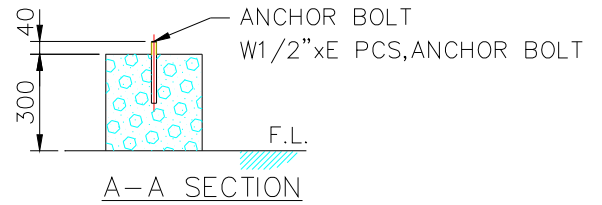
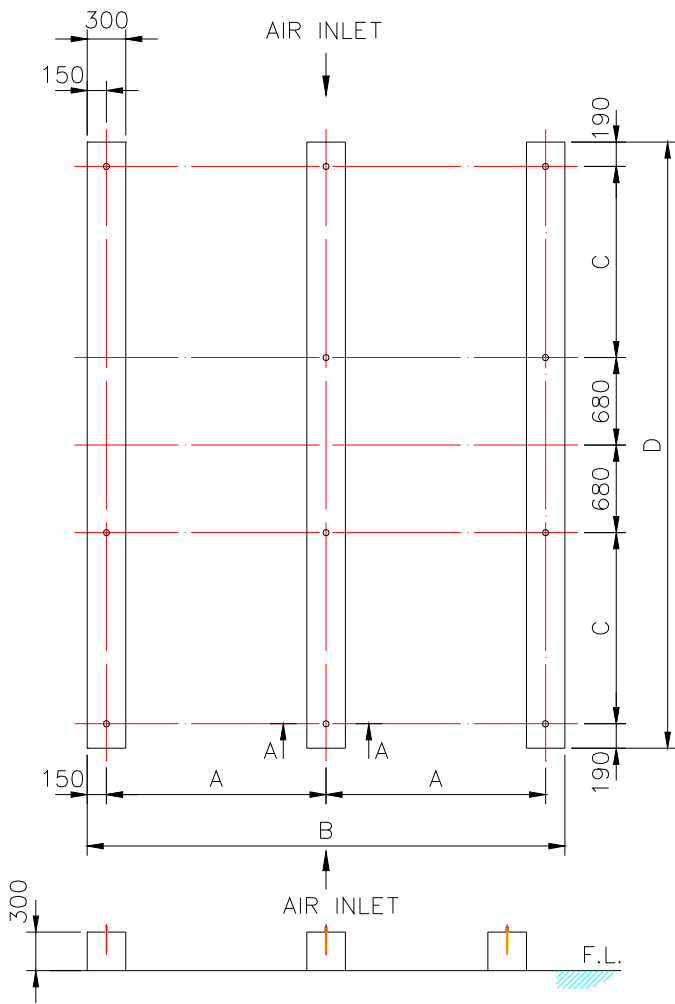


LCTR-1011B~1025D

REMARK :

1. THIS FOUNDATION DRAWING IS FOR REFERENCE TO POSITION THE ANCHOR BOLTS WITHOUT ISOLATORS (SPRING MOUNTS).
2. THE LEVEL TOLERANCE OF FOUNDATION IS $\pm 2\text{mm}$.
3. THE HEIGHT OF FOUNDATION EXCLUDES THERMAL ISOLATOR AND WATER PROOF.
4. THIS DRAWING IS FOR NON-ISOLATOR TYPE FOUNDATION, FOR ISOLATOR TYPE FOUNDATION, PLEASE CONTACT YOUR LOCAL SALES ENGINEER FOR DETAILS.
5. ALL DIMENSIONS ARE IN MILLIMETERS.

ITEMS LCTR-	A	B	C	D	E
1011B	902.5	2185	735	3130	8
1011C	902.5	2185	735	3130	8
1011D	902.5	2185	735	3130	8
1012B	1105	2590	835	3330	8
1012C	1105	2590	835	3330	8
1012D	1105	2590	835	3330	8
1016B	1105	2590	835	3330	8
1016C	1105	2590	835	3330	8
1016D	1105	2590	835	3330	8
1018B	1205	2790	885	3430	8
1018C	1205	2790	885	3430	8
1018D	1205	2790	885	3430	8
1021B	1255	2890	985	3630	8
1021C	1255	2890	985	3630	8
1021D	1255	2890	985	3630	8
1022B	1255	2890	985	3630	8
1022C	1255	2890	985	3630	8
1022D	1255	2890	985	3630	8
1025B	1405	3190	985	3630	8
1025C	1405	3190	985	3630	8
1025D	1405	3190	985	3630	8

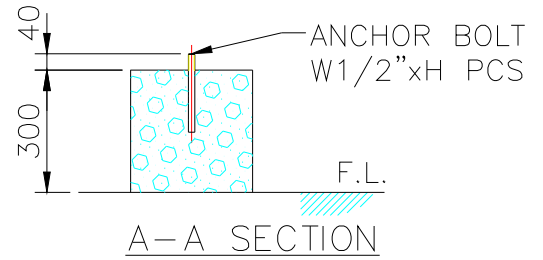
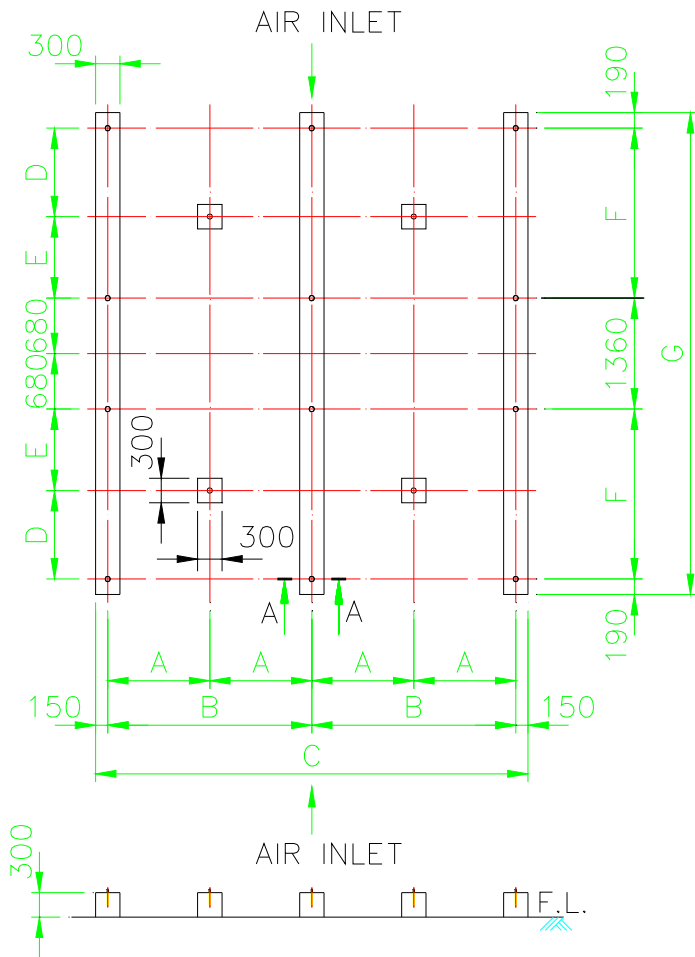


LCTR-1030B~1052D

REMARK :

1. THIS FOUNDATION DRAWING IS FOR REFERENCE TO POSITION THE ANCHOR BOLTS WITHOUT ISOLATORS (SPRING MOUNTS).
2. THE LEVEL TOLERANCE OF FOUNDATION IS $\pm 2\text{mm}$.
3. THE HEIGHT OF FOUNDATION EXCLUDES THERMAL ISOLATOR AND WATER PROOF.
4. THIS DRAWING IS FOR NON-ISOLATOR TYPE FOUNDATION , FOR ISOLATOR TYPE FOUNDATION , PLEASE CONTACT YOUR LOCAL SALES ENGINEER FOR DETAILS.
5. ALL DIMENSIONS ARE IN MILIMETERS.

ITEMS LCTR-	A	B	C	D	E
1030B	1710	3720	1485	4710	12
1030C	1710	3720	1485	4710	12
1030D	1710	3720	1485	4710	12
1036B	2010	4320	1685	5110	12
1036C	2010	4320	1685	5110	12
1036D	2010	4320	1685	5110	12
1040B	2010	4320	1985	5710	12
1040C	2010	4320	1985	5710	12
1040D	2010	4320	1985	5710	12
1047B	2110	4520	1985	5710	12
1047C	2110	4520	1985	5710	12
1047D	2110	4520	1985	5710	12
1052B	2110	4520	1985	5710	12
1052C	2110	4520	1985	5710	12
1052D	2110	4520	1985	5710	12



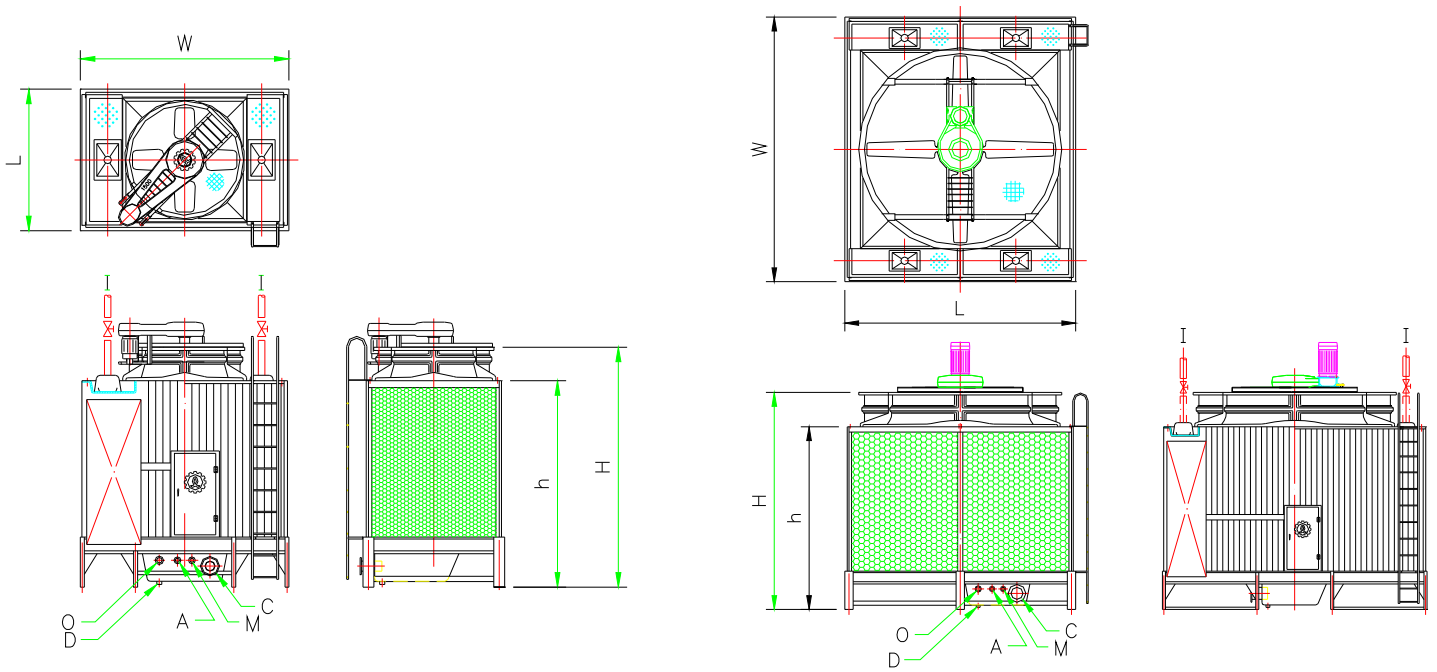
LCTR-1060B~1105D

REMARK :

1. THIS FOUNDATION DRAWING IS FOR REFERENCE TO POSITION THE ANCHOR BOLTS WITHOUT ISOLATORS(SPRING MOUNTS).
2. THE LEVEL TOLERANCE OF FOUNDATION IS $\pm 2\text{mm}$.
3. THE HEIGHT OF FOUNDATION EXCLUDES THERMAL ISOLATOR AND WATER PROOF.
4. THIS DRAWING IS FOR NON-ISOLATOR TYPE FOUNDATION , FOR ISOLATOR TYPE FOUNDATION , PLEASE CONTACT YOUR LOCAL SALES ENGINEER FOR DETAILS.
5. ALL DIMENSIONS ARE IN MILLIMETERS.

ITEMS LCTR-	A	B	C	D	E	F	G	H
1060B	1405	2810	5920	1085	1000	2085	5910	16
1060C	1405	2810	5920	1085	1000	2085	5910	16
1060D	1405	2810	5920	1085	1000	2085	5910	16
1077B	1405	2810	5920	1260	1175	2435	6610	16
1077C	1405	2810	5920	1260	1175	2435	6610	16
1077D	1405	2810	5920	1260	1175	2435	6610	16
1082B	1555	3110	6520	1260	1175	2435	6610	16
1082C	1555	3110	6520	1260	1175	2435	6610	16
1082D	1555	3110	6520	1260	1175	2435	6610	16
1090B	1555	3110	6520	1260	1175	2435	6610	16
1090C	1555	3110	6520	1260	1175	2435	6610	16
1090D	1555	3110	6520	1260	1175	2435	6610	16
1105B	1755	3510	7320	1260	1175	2435	6610	16
1105C	1755	3510	7320	1260	1175	2435	6610	16
1105D	1755	3510	7320	1260	1175	2435	6610	16

Dimensions and Standard Specifications



LCTR-1011B~1025D

LCTR-1030B~1036D

Tower Model LCTR-	Nominal Ton*1	Nominal Water Flow (L/S)	Dimensions (mm)				Fan Dia. (mm)	Fan Motor (HP)
			Width	Length	Height			
			W	L	h	H		
1011B	97	21	2880	1955	2850	3310	1500	3x1
1011C	115	24.9	2880	1955	2850	3310	1500	5x1
1011D	132	28.6	2880	1955	2850	3310	1500	7.5x1
1012B	118	25.6	3080	2360	2850	3350	1700	3x1
1012C	140	30.3	3080	2360	2850	3350	1700	5x1
1012D	160	34.7	3080	2360	2850	3350	1700	7.5x1
1016B	140	30.3	3080	2360	2850	3350	1700	5x1
1016C	160	34.7	3080	2360	2850	3350	1700	7.5x1
1016D	176	38.1	3080	2360	2850	3350	1700	10x1
1018B	162	35.1	3180	2560	2850	3370	1800	5x1
1018C	185	40.1	3180	2560	2850	3370	1800	7.5x1
1018D	203	44	3180	2560	2850	3370	1800	10x1
1021B	184	39.9	3380	2660	2850	3370	2000	5x1
1021C	205	44.4	3380	2660	2850	3370	2000	7.5x1
1021D	225	48.8	3380	2660	2850	3370	2000	10x1
1022B	205	44.4	3380	2660	2850	3370	2000	7.5x1
1022C	225	48.8	3380	2660	2850	3370	2000	10x1
1022D	257	55.7	3380	2660	2850	3370	2000	15x1
1025B	219	47.5	3380	2960	2850	3370	2000	10x1
1025C	250	54.2	3380	2960	2850	3370	2000	15x1
1025D	275	59.6	3380	2960	2850	3370	2000	20x1
1030B	262	56.8	4380	3570	3300	3920	2970	10x1
1030C	300	65	4380	3570	3300	3920	2970	15x1
1030D	330	71.5	4380	3570	3300	3920	2970	20x1
1036B	315	68.3	4780	4170	3300	4120	3380	10x1
1036C	360	78	4780	4170	3300	4120	3380	15x1
1036D	396	85.8	4780	4170	3300	4120	3380	20x1

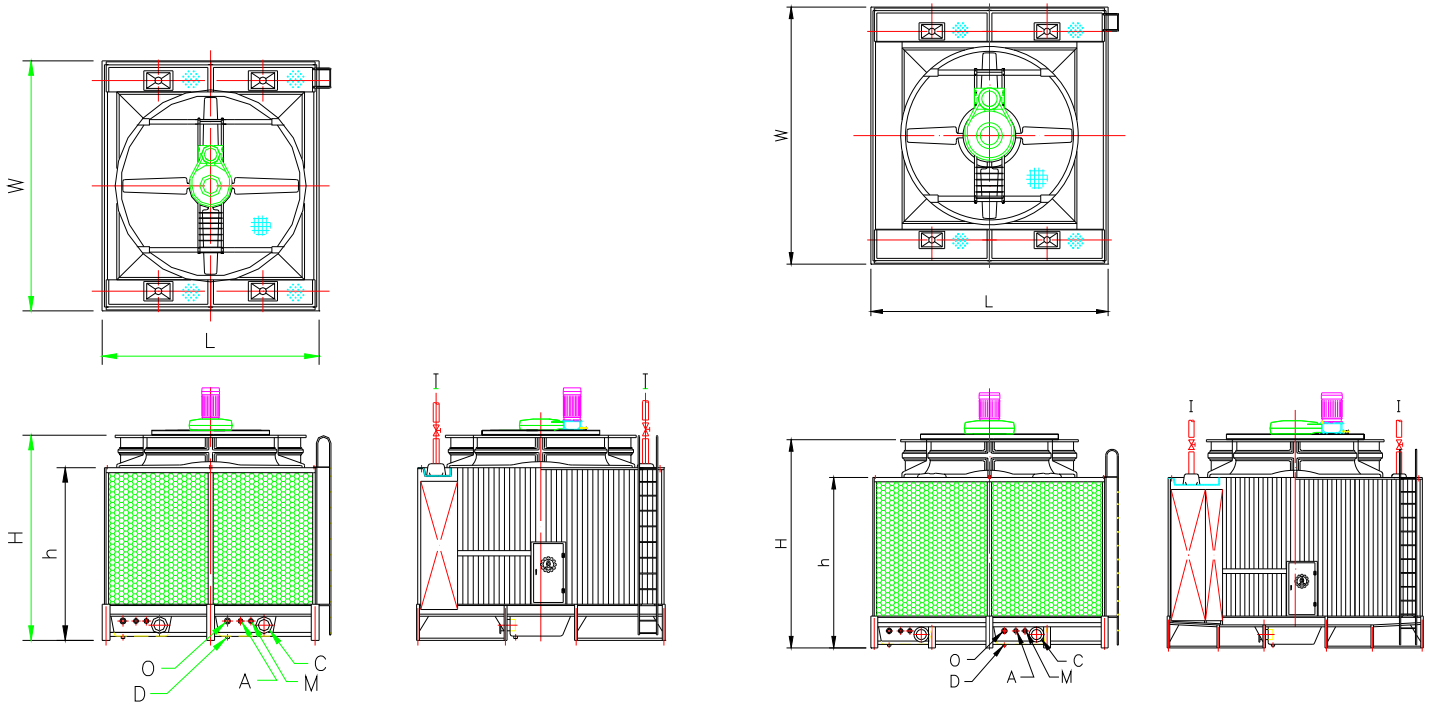
Tower Model LCTR-	Pipe Connections						Approximate		Tower Head* 2 (M)
	Inlet	Outlet	Drain	Over Flow	Auto Filler	Quick Filler	Dry	Operating	
	(I)	(C)	(D)	(O)	(A)	(M)	Wt.(kg)	Wt.(kg)	
1011B	4B(100A)x2	5B(125A)x1	2B(50A)x1	2B(50A)x1	1B(25A)x1	1B(25A)x1	800	2220	3.7
1011C	4B(100A)x2	5B(125A)x1	2B(50A)x1	2B(50A)x1	1B(25A)x1	1B(25A)x1	800	2220	3.7
1011D	4B(100A)x2	5B(125A)x1	2B(50A)x1	2B(50A)x1	1B(25A)x1	1B(25A)x1	800	2220	3.7
1012B	4B(100A)x2	6B(150A)x1	2B(50A)x1	2B(50A)x1	1B(25A)x1	1B(25A)x1	970	2670	3.8
1012C	4B(100A)x2	6B(150A)x1	2B(50A)x1	2B(50A)x1	1B(25A)x1	1B(25A)x1	970	2670	3.8
1012D	4B(100A)x2	6B(150A)x1	2B(50A)x1	2B(50A)x1	1B(25A)x1	1B(25A)x1	970	2670	3.8
1016B	5B(125A)x2	6B(150A)x1	2B(50A)x1	2B(50A)x1	1B(25A)x1	1B(25A)x1	970	2670	3.8
1016C	5B(125A)x2	6B(150A)x1	2B(50A)x1	2B(50A)x1	1B(25A)x1	1B(25A)x1	970	2670	3.8
1016D	5B(125A)x2	6B(150A)x1	2B(50A)x1	2B(50A)x1	1B(25A)x1	1B(25A)x1	970	2670	3.8
1018B	5B(125A)x2	8B(200A)x1	2B(50A)x1	2B(50A)x1	1 1/4B(32A)x1	1 1/4B(32A)x1	1030	2830	3.8
1018C	5B(125A)x2	8B(200A)x1	2B(50A)x1	2B(50A)x1	1 1/4B(32A)x1	1 1/4B(32A)x1	1030	2830	3.8
1018D	5B(125A)x2	8B(200A)x1	2B(50A)x1	2B(50A)x1	1 1/4B(32A)x1	1 1/4B(32A)x1	1030	2830	3.8
1021B	5B(125A)x2	8B(200A)x1	2B(50A)x1	2B(50A)x1	1 1/4B(32A)x1	1 1/4B(32A)x1	1120	3170	3.8
1021C	5B(125A)x2	8B(200A)x1	2B(50A)x1	2B(50A)x1	1 1/4B(32A)x1	1 1/4B(32A)x1	1120	3170	3.8
1021D	5B(125A)x2	8B(200A)x1	2B(50A)x1	2B(50A)x1	1 1/4B(32A)x1	1 1/4B(32A)x1	1120	3170	3.8
1022B	5B(125A)x2	8B(200A)x1	2B(50A)x1	2B(50A)x1	1 1/4B(32A)x1	1 1/4B(32A)x1	1140	3190	3.8
1022C	5B(125A)x2	8B(200A)x1	2B(50A)x1	2B(50A)x1	1 1/4B(32A)x1	1 1/4B(32A)x1	1140	3190	3.8
1022D	5B(125A)x2	8B(200A)x1	2B(50A)x1	2B(50A)x1	1 1/4B(32A)x1	1 1/4B(32A)x1	1140	3190	3.8
1025B	5B(125A)x2	8B(200A)x1	2B(50A)x1	2B(50A)x1	1 1/4B(32A)x1	1 1/4B(32A)x1	1260	3430	3.8
1025C	5B(125A)x2	8B(200A)x1	2B(50A)x1	2B(50A)x1	1 1/4B(32A)x1	1 1/4B(32A)x1	1260	3430	3.8
1025D	5B(125A)x2	8B(200A)x1	2B(50A)x1	2B(50A)x1	1 1/4B(32A)x1	1 1/4B(32A)x1	1260	3430	3.8
1030B	5B(125A)x4	8B(200A)x1	2B(50A)x1	2B(50A)x1	1 1/4B(32A)x1	1 1/4B(32A)x1	1720	4040	3.9
1030C	5B(125A)x4	8B(200A)x1	2B(50A)x1	2B(50A)x1	1 1/4B(32A)x1	1 1/4B(32A)x1	1720	4040	3.9
1030D	5B(125A)x4	8B(200A)x1	2B(50A)x1	2B(50A)x1	1 1/4B(32A)x1	1 1/4B(32A)x1	1720	4040	3.9
1036B	5B(125A)x4	8B(200A)x1	2B(50A)x1	2B(50A)x1	1 1/4B(32A)x1	1 1/4B(32A)x1	1990	5510	3.9
1036C	5B(125A)x4	8B(200A)x1	2B(50A)x1	2B(50A)x1	1 1/4B(32A)x1	1 1/4B(32A)x1	1990	5510	3.9
1036D	5B(125A)x4	8B(200A)x1	2B(50A)x1	2B(50A)x1	1 1/4B(32A)x1	1 1/4B(32A)x1	1990	5510	3.9

1. Nominal Tons are defined as the capacity that can deal with 13 lpm of water per ton, cooled from 37°C to 32°C with a 27°C entering wet bulb temperature.

2. Total pump head required for cooling water circulation pump is the sum of condenser water pressure drop, piping friction loss and tower head.

3. All dimensions are in millimeters. Weights are in kilograms.

4. Multiple cell models of the single cell models above are also available but not listed. For more information, please Contact your local supplier or distributor.



LCTR-1040B~1052D

LCTR-1060B~1105D

Tower Model LCTR-	Nominal Ton*1	Nominal Water Flow (L/S)	Dimensions (mm)				Fan Dia. (mm)	Fan Motor (HP)
			Width	Length	Height			
			W	L	h	H		
1040B	350	75.8	5380	4170	3300	4120	3380	10 x 1
1040C	400	86.7	5380	4170	3300	4120	3380	15 x 1
1040D	440	95.3	5380	4170	3300	4120	3380	20 x 1
1047B	416	90.1	5380	4370	3700	4520	3380	10 x 1
1047C	478	103.6	5380	4370	3700	4520	3380	15 x 1
1047D	525	113.8	5380	4370	3700	4520	3380	20 x 1
1052B	478	103.6	5380	4370	3700	4520	3380	15 x 1
1052C	525	113.8	5380	4370	3700	4520	3380	20 x 1
1052D	600	130	5380	4370	3700	4520	3380	30 x 1
1060B	546	118.3	5580	5770	3700	4520	3580	15 x 1
1060C	600	130	5580	5770	3700	4520	3580	20 x 1
1060D	686	148.6	5580	5770	3700	4520	3580	30 x 1
1077B	678	146.9	6280	5770	4200	5020	4250	20 x 1
1077C	775	167.9	6280	5770	4200	5020	4250	30 x 1
1077D	852	184.6	6280	5770	4200	5020	4250	40 x 1
1082B	722	156.4	6280	6370	4200	5020	4250	20 x 1
1082C	819	177.5	6280	6370	4200	5020	4250	30 x 1
1082D	900	195	6280	6370	4200	5020	4250	40 x 1
1090B	819	177.5	6280	6370	4200	5020	4250	30 x 1
1090C	900	195	6280	6370	4200	5020	4250	40 x 1
1090D	969	210	6280	6370	4200	5020	4250	50 x 1
1105B	955	206.9	6280	7170	4200	5020	4250	30 x 1
1105C	1050	227.5	6280	7170	4200	5020	4250	40 x 1
1105D	1130	244.8	6280	7170	4200	5020	4250	50 x 1

Tower Model LCTR-	Pipe Connections						Approximate		Tower Head*2 (M)
	Inlet	Outlet	Drain	Over Flow	Auto Filler	Quick Filler	Dry Wt.(kg)	Operating Wt.(kg)	
	(I)	(C)	(D)	(O)	(A)	(M)			
1040B	5B(125A)x4	8B(200A)x2	2B(50A)x2	2B(50A)x2	1 1/4B(32A)x2	1 1/4B(32A)x2	2290	6420	3.9
1040C	5B(125A)x4	8B(200A)x2	2B(50A)x2	2B(50A)x2	1 1/4B(32A)x2	1 1/4B(32A)x2	2290	6420	3.9
1040D	5B(125A)x4	8B(200A)x2	2B(50A)x2	2B(50A)x2	1 1/4B(32A)x2	1 1/4B(32A)x2	2290	6420	3.9
1047B	5B(125A)x4	8B(200A)x2	2B(50A)x2	2B(50A)x2	1 1/4B(32A)x2	1 1/4B(32A)x2	2520	6930	4.3
1047C	5B(125A)x4	8B(200A)x2	2B(50A)x2	2B(50A)x2	1 1/4B(32A)x2	1 1/4B(32A)x2	2520	6930	4.3
1047D	5B(125A)x4	8B(200A)x2	2B(50A)x2	2B(50A)x2	1 1/4B(32A)x2	1 1/4B(32A)x2	2520	6930	4.3
1052B	5B(125A)x4	8B(200A)x2	2B(50A)x2	2B(50A)x2	1 1/4B(32A)x2	1 1/4B(32A)x2	2690	7100	4.3
1052C	5B(125A)x4	8B(200A)x2	2B(50A)x2	2B(50A)x2	1 1/4B(32A)x2	1 1/4B(32A)x2	2690	7100	4.3
1052D	5B(125A)x4	8B(200A)x2	2B(50A)x2	2B(50A)x2	1 1/4B(32A)x2	1 1/4B(32A)x2	2690	7100	4.3
1060B	6B(150A)x4	8B(200A)x2	2B(50A)x2	2B(50A)x2	1 1/4B(32A)x2	1 1/4B(32A)x2	4400	11400	4.3
1060C	6B(150A)x4	8B(200A)x2	2B(50A)x2	2B(50A)x2	1 1/4B(32A)x2	1 1/4B(32A)x2	4400	11400	4.3
1060D	6B(150A)x4	8B(200A)x2	2B(50A)x2	2B(50A)x2	1 1/4B(32A)x2	1 1/4B(32A)x2	4400	11400	4.3
1077B	6B(150A)x4	10B(250A)x2	2B(50A)x2	2B(50A)x2	2B(50A)x2	2B(50A)x2	4900	12800	4.7
1077C	6B(150A)x4	10B(250A)x2	2B(50A)x2	2B(50A)x2	2B(50A)x2	2B(50A)x2	4900	12800	4.7
1077D	6B(150A)x4	10B(250A)x2	2B(50A)x2	2B(50A)x2	2B(50A)x2	2B(50A)x2	4900	12800	4.7
1082B	8B(200A)x4	10B(250A)x2	2B(50A)x2	2B(50A)x2	2B(50A)x2	2B(50A)x2	5300	14000	4.7
1082C	8B(200A)x4	10B(250A)x2	2B(50A)x2	2B(50A)x2	2B(50A)x2	2B(50A)x2	5300	14000	4.7
1082D	8B(200A)x4	10B(250A)x2	2B(50A)x2	2B(50A)x2	2B(50A)x2	2B(50A)x2	5300	14000	4.7
1090B	8B(200A)x4	10B(250A)x2	2B(50A)x2	2B(50A)x2	2B(50A)x2	2B(50A)x2	5440	14140	4.7
1090C	8B(200A)x4	10B(250A)x2	2B(50A)x2	2B(50A)x2	2B(50A)x2	2B(50A)x2	5440	14140	4.7
1090D	8B(200A)x4	10B(250A)x2	2B(50A)x2	2B(50A)x2	2B(50A)x2	2B(50A)x2	5440	14140	4.7
1105B	8B(200A)x4	10B(250A)x2	2B(50A)x2	2B(50A)x2	2B(50A)x2	2B(50A)x2	5800	15400	4.7
1105C	8B(200A)x4	10B(250A)x2	2B(50A)x2	2B(50A)x2	2B(50A)x2	2B(50A)x2	5800	15400	4.7
1105D	8B(200A)x4	10B(250A)x2	2B(50A)x2	2B(50A)x2	2B(50A)x2	2B(50A)x2	5800	15400	4.7

1. Nominal Tons are defined as the capacity that can deal with 13 lpm of water per ton, cooled from 37°C to 32°C with a 27°C entering wet bulb temperature.

2. Total pump head required for cooling water circulation pump is the sum of condenser water pressure drop, piping friction loss and tower head.

3. All dimensions are in millimeters. Weights are in kilograms.

4. Multiple cell models of the single cell models above are also available but not listed. For more information, please Contact your local supplier or distributor.

STD-201RS Table 3a - IP Units - Cooling Towers (CT)

Condition Reference #	1	2	3	4	5	6	7	8	9	10
Wet Bulb °F	50	50	50	50	50	55	55	55	55	55
Range °F	10	10	10	15	15	10	10	10	15	15
Approach °F	7	10	12	7	12	7	10	12	7	12
Inlet Water Temperature °F	67	70	72	72	77	72	75	77	77	82
Outlet Water Temperature °F	57	60	62	57	62	62	65	67	62	67
	GPM									
LCTR-1011B	122.6	165.2	195.1	96.7	149.1	136.7	183.9	217.4	108.1	166.5
LCTR-1011C	145.4	195.9	231.4	114.7	176.8	162.2	218	257.7	128.2	197.5
LCTR-1011D	167	224.9	265.6	131.8	203	186.3	250.3	295.9	147.3	226.8
LCTR-1012B	150.6	202	238.1	119.3	182.8	167.8	224.7	265.1	133.3	204.1
LCTR-1012C	178.7	239.8	282.6	141.7	217	199.2	266.7	314.5	158.2	242.2
LCTR-1012D	204.3	274.1	323	162	248.1	227.7	304.8	359.5	181	277
LCTR-1016B	178.7	239.8	282.6	141.7	217	199.2	266.7	314.5	158.2	242.2
LCTR-1016C	204.3	274.1	323	162	248.1	227.7	304.8	359.5	181	277
LCTR-1016D	224.8	301.5	355.3	178.3	272.9	250.5	335.3	395.4	199.1	304.7
LCTR-1018B	207.8	278.2	327.5	165.1	252.1	231.5	309.3	364.3	184.4	281.4
LCTR-1018C	237.3	317.6	374	188.5	287.9	264.3	353.2	416.1	210.5	321.3
LCTR-1018D	260.4	348.6	410.4	206.9	316	290.1	387.6	456.6	231	352.6
LCTR-1021B	234.4	314.8	371.1	185.6	284.7	261.3	350.1	413.1	207.4	317.9
LCTR-1021C	260.2	349.9	413	205.6	316.1	290.1	389.3	459.8	229.8	353.1
LCTR-1021D	285.6	384.1	453.3	225.8	347	318.4	427.4	504.7	252.3	387.6
LCTR-1022B	260.2	349.9	413	205.6	316.1	290.1	389.3	459.8	229.8	353.1
LCTR-1022C	285.6	384.1	453.3	225.8	347	318.4	427.4	504.7	252.3	387.6
LCTR-1022D	326.2	438.7	517.7	257.8	396.3	363.7	488.1	576.5	288.1	442.7
LCTR-1025B	278.7	374.4	441.5	220.5	338.5	310.6	416.5	491.6	246.4	378
LCTR-1025C	318.1	427.3	504	251.7	386.3	354.6	475.4	561.1	281.2	431.4
LCTR-1025D	349.9	470	554.4	276.8	424.9	390	522.9	617.2	309.3	474.5
LCTR-1030B	339.6	452.5	531.4	271.3	411.5	378.1	502.7	590.8	302.7	458.9
LCTR-1030C	388.9	518.1	608.5	310.6	471.2	432.9	575.6	676.4	346.6	525.4
LCTR-1030D	427.7	570	669.3	341.7	518.3	476.1	633.2	744.1	381.2	578
LCTR-1036B	403.9	540.8	636.7	320.9	490.1	450	601.3	708.4	358.3	547
LCTR-1036C	461.5	618	727.6	366.6	560	514.2	687.1	809.5	409.3	625
LCTR-1036D	507.6	679.7	800.4	403.2	616	565.5	755.8	890.5	450.2	687.5
LCTR-1040B	448.7	600.8	707.4	356.4	544.4	499.9	668	787.1	398	607.6
LCTR-1040C	512.8	686.6	808.5	407.3	622.2	571.3	763.4	899.5	454.8	694.4
LCTR-1040D	564.1	755.3	889.3	448.1	684.4	628.4	839.8	989.4	500.3	763.9
LCTR-1047B	547.5	724.5	847.8	440.8	662	608.7	804	941.4	491.3	737.5
LCTR-1047C	634.4	836.3	976.6	513.1	766.3	705	927.5	1083.7	571.6	853.2
LCTR-1047D	696.7	918.5	1072.6	563.4	841.6	774.2	1018.6	1190.2	627.6	936.9
LCTR-1052B	634.4	836.3	976.6	513.1	766.3	705	927.5	1083.7	571.6	853.2
LCTR-1052C	696.7	918.5	1072.6	563.4	841.6	774.2	1018.6	1190.2	627.6	936.9
LCTR-1052D	796.2	1049.7	1225.8	643.9	961.8	884.8	1164.1	1360.3	717.3	1070.8
LCTR-1060B	717	949.8	1111.9	576.5	867.2	797.3	1054.1	1234.9	642.7	966.2
LCTR-1060C	787.9	1043.7	1221.9	633.6	953	876.2	1158.3	1357	706.3	1061.8
LCTR-1060D	900.9	1193.4	1397.1	724.5	1089.7	1001.8	1324.4	1551.6	807.6	1214.1
LCTR-1077B	894.9	1182.7	1382.9	721.6	1081.7	994.8	1312.1	1535.2	804.1	1204.8
LCTR-1077C	1022.9	1351.9	1580.8	824.8	1236.4	1137.1	1499.8	1754.9	919.1	1377.1
LCTR-1077D	1124.5	1486.2	1737.8	906.8	1359.3	1250.1	1648.8	1929.2	1010.4	1513.9
LCTR-1082B	941.8	1251.3	1467.4	754.7	1140.1	1047.8	1389.5	1630.4	841.7	1270.9
LCTR-1082C	1078.1	1426.6	1669.2	868.1	1303.7	1198.7	1583	1853.4	967.6	1452.2
LCTR-1082D	1184.6	1567.6	1834.2	953.8	1432.4	1317.1	1739.5	2036.6	1063.1	1595.7
LCTR-1090B	1078.1	1426.6	1669.2	868.1	1303.7	1198.7	1583	1853.4	967.6	1452.2
LCTR-1090C	1184.6	1567.6	1834.2	953.8	1432.4	1317.1	1739.5	2036.6	1063.1	1595.7
LCTR-1090D	1275.4	1687.7	1974.8	1026.9	1542.2	1418	1872.8	2192.8	1144.5	1718
LCTR-1105B	1273.8	1675.3	1954.1	1033.1	1537.7	1414.9	1857.2	2167.6	1150.3	1711.3
LCTR-1105C	1400.4	1841.8	2148.4	1135.6	1690.5	1555.5	2041.8	2383.1	1264.5	1881.4
LCTR-1105D	1507.4	1982.4	2312.2	1222.5	1819.6	1674.3	2197.6	2564.8	1361.3	2025.1

STD-201RS Table 3a - IP Units - Cooling Towers (CT)

Condition Reference #	11	12	13	14	15	16	17	18	19	20
Wet Bulb °F	60	60	60	60	60	65	65	65	65	65
Range °F	10	10	10	15	15	10	10	10	15	15
Approach °F	7	10	12	7	12	7	10	12	7	12
Inlet Water Temperature °F	77	80	82	82	87	82	85	87	87	92
Outlet Water Temperature °F	67	70	72	67	72	72	75	77	72	77
	GPM									
LCTR-1011B	152.7	206.1	243.8	121.1	187.2	172	232.4	274.6	136.6	211.5
LCTR-1011C	181.1	244.4	289	143.6	222	204	275.6	325.6	162	250.8
LCTR-1011D	208	280.6	331.8	165	254.9	234.3	316.4	373.7	186.2	288
LCTR-1012B	187.3	251.7	297	149.2	229.3	210.8	283.6	334.3	168.2	258.8
LCTR-1012C	222.3	298.6	352.4	177.1	272.1	250.1	336.5	396.6	199.7	307.2
LCTR-1012D	254.1	341.4	402.7	202.5	311.1	286	384.6	453.3	228.4	351.2
LCTR-1016B	222.3	298.6	352.4	177.1	272.1	250.1	336.5	396.6	199.7	307.2
LCTR-1016C	254.1	341.4	402.7	202.5	311.1	286	384.6	453.3	228.4	351.2
LCTR-1016D	279.6	375.5	443	222.8	342.2	314.6	423.1	498.6	251.2	386.3
LCTR-1018B	258.2	346.2	408.1	206.2	315.9	290.5	389.9	459.1	232.5	356.5
LCTR-1018C	294.9	395.4	466	235.5	360.7	331.7	445.3	524.3	265.4	407.1
LCTR-1018D	323.6	433.9	511.4	258.5	395.9	364.1	488.6	575.3	291.4	446.8
LCTR-1021B	291.6	392.2	463	232.1	357.1	328.3	441.9	521.2	261.8	403.2
LCTR-1021C	323.8	436.3	515.5	257.2	396.8	364.6	491.8	580.5	290.2	448.1
LCTR-1021D	355.5	478.9	565.8	282.4	435.5	400.3	539.8	637.1	318.7	491.9
LCTR-1022B	323.8	436.3	515.5	257.2	396.8	364.6	491.8	580.5	290.2	448.1
LCTR-1022C	355.5	478.9	565.8	282.4	435.5	400.3	539.8	637.1	318.7	491.9
LCTR-1022D	406	547	646.3	322.6	497.4	457.2	616.6	727.8	363.9	561.9
LCTR-1025B	346.7	466.6	550.9	275.8	424.6	390.3	525.8	620.3	311.1	479.5
LCTR-1025C	395.8	532.6	628.9	314.8	484.7	445.5	600.2	708.1	355.1	547.4
LCTR-1025D	435.3	585.8	691.8	346.2	533.2	490.1	660.2	778.9	390.5	602.1
LCTR-1030B	421.4	562.3	661.1	338.4	514.8	473.6	632.6	743	381.1	580.4
LCTR-1030C	482.5	643.8	756.9	387.4	589.4	542.3	724.4	850.7	436.4	664.5
LCTR-1030D	530.7	708.2	832.6	426.2	648.4	596.5	796.8	935.8	480	731
LCTR-1036B	502	673.1	793.4	400.8	614.2	564.7	758.1	892.6	451.9	693.1
LCTR-1036C	573.6	769.2	906.7	457.9	701.8	645.3	866.3	1020.1	516.3	791.9
LCTR-1036D	630.9	846.1	997.4	503.7	771.9	709.8	952.9	1122.1	567.8	871.1
LCTR-1040B	557.6	747.9	881.5	445.2	682.3	627.4	842.3	991.8	501.9	769.9
LCTR-1040C	637.3	854.7	1007.5	508.8	779.7	717	962.6	1133.5	573.6	879.9
LCTR-1040D	701	940.2	1108.2	559.7	857.7	788.7	1058.8	1246.8	631	967.9
LCTR-1047B	677.7	898.1	1052	548.6	826.3	760.7	1009	1180.8	617.1	930.4
LCTR-1047C	784.4	1035.4	1210.3	637.9	955.3	879.8	1162.3	1357.4	717.1	1074.8
LCTR-1047D	861.4	1137.1	1329.2	700.4	1049.1	966.2	1276.5	1490.8	787.4	1180.4
LCTR-1052B	784.4	1035.4	1210.3	637.9	955.3	879.8	1162.3	1357.4	717.1	1074.8
LCTR-1052C	861.4	1137.1	1329.2	700.4	1049.1	966.2	1276.5	1490.8	787.4	1180.4
LCTR-1052D	984.5	1299.5	1519.1	800.5	1199	1104.2	1458.9	1703.8	899.9	1349
LCTR-1060B	887.8	1177.7	1380.3	717.8	1082.8	996.8	1323.5	1549.5	807.6	1219.4
LCTR-1060C	975.7	1294.2	1516.8	788.8	1189.9	1095.3	1454.4	1702.8	887.5	1340
LCTR-1060D	1115.6	1479.8	1734.2	902	1360.5	1252.4	1662.9	1946.9	1014.9	1532.1
LCTR-1077B	1107.3	1465.4	1715.3	897.8	1349.6	1242.6	1646	1924.7	1009.7	1519.1
LCTR-1077C	1265.7	1675	1960.7	1026.2	1542.6	1420.4	1881.4	2200.1	1154.1	1736.4
LCTR-1077D	1391.5	1841.5	2155.5	1128.1	1695.9	1561.5	2068.3	2418.7	1268.8	1909
LCTR-1082B	1167.4	1553.4	1823.4	940.5	1425	1311.4	1746.6	2048.2	1058.8	1605.7
LCTR-1082C	1334.6	1768.3	2071.2	1080.5	1627.1	1498	1986.7	2324.6	1215.4	1832
LCTR-1082D	1466.5	1943.1	2276	1187.1	1787.9	1646	2183.1	2554.5	1335.4	2013
LCTR-1090B	1334.6	1768.3	2071.2	1080.5	1627.1	1498	1986.7	2324.6	1215.4	1832
LCTR-1090C	1466.5	1943.1	2276	1187.1	1787.9	1646	2183.1	2554.5	1335.4	2013
LCTR-1090D	1578.8	2092.1	2450.5	1278.1	1924.9	1772.1	2350.4	2750.4	1437.7	2167.3
LCTR-1105B	1573.8	2072.4	2419.7	1283.3	1915.4	1764.4	2325.6	2712.6	1442.1	2154.2
LCTR-1105C	1730.1	2278.5	2660.3	1410.7	2105.8	1939.8	2556.8	2982.4	1585.2	2368.2
LCTR-1105D	1862.3	2452.3	2863.1	1518.7	2266.6	2087.9	2751.8	3209.7	1706.5	2549

STD-201RS Table 3a - IP Units - Cooling Towers (CT)

Condition Reference #	21	22	23	24	25	26	27	28	29	30
Wet Bulb °F	70	70	70	70	70	75	75	75	75	75
Range °F	10	10	10	15	15	10	10	10	15	15
Approach °F	7	10	12	7	12	7	10	12	7	12
Inlet Water Temperature °F	87	90	92	92	97	92	95	97	97	102
Outlet Water Temperature °F	77	80	82	77	82	82	85	87	82	87
	GPM									
LCTR-1011B	194.1	262.3	310.4	154.6	239.3	219.9	296	351.3	175.3	271.5
LCTR-1011C	230.1	311	368	183.3	283.8	260.7	350.9	416.5	207.9	321.9
LCTR-1011D	264.3	357	422.3	210.6	325.9	299.4	402.9	478	238.8	369.7
LCTR-1012B	237.6	319.7	377.5	190.2	292.6	269	360.5	426.8	215.5	331.7
LCTR-1012C	282	379.4	447.8	225.7	347.3	319.1	427.7	506.4	255.8	393.6
LCTR-1012D	322.4	433.6	511.8	258.2	397	364.8	488.9	578.7	292.5	449.9
LCTR-1016B	282	379.4	447.8	225.7	347.3	319.1	427.7	506.4	255.8	393.6
LCTR-1016C	322.4	433.6	511.8	258.2	397	364.8	488.9	578.7	292.5	449.9
LCTR-1016D	354.7	477	563	284	436.7	401.4	537.8	636.5	321.8	495
LCTR-1018B	327.4	439.4	518.1	262.7	402.9	370.3	495.2	585.6	297.5	456.4
LCTR-1018C	373.8	501.8	591.7	300	460	422.9	565.5	668.7	339.7	521.2
LCTR-1018D	410.2	550.7	649.3	329.3	504.8	464.1	620.6	733.8	372.9	572
LCTR-1021B	370.1	498.4	588.6	296	455.9	419	562	665.7	335.4	516.9
LCTR-1021C	411.3	554.8	655.9	328.3	506.9	465.8	625.9	742	372.1	574.9
LCTR-1021D	451.5	609	719.8	360.4	556.4	511.3	687	814.4	408.5	631
LCTR-1022B	411.3	554.8	655.9	328.3	506.9	465.8	625.9	742	372.1	574.9
LCTR-1022C	451.5	609	719.8	360.4	556.4	511.3	687	814.4	408.5	631
LCTR-1022D	515.7	695.6	822.2	411.6	635.5	583.9	784.7	930.2	466.6	720.7
LCTR-1025B	440.2	593	700.6	351.8	542.3	498.3	668.8	792.4	398.7	614.8
LCTR-1025C	502.4	677	799.8	401.5	619	568.8	763.5	904.6	455.1	701.8
LCTR-1025D	552.6	744.7	879.8	441.6	680.9	625.7	839.8	995.1	500.5	772
LCTR-1030B	533.2	712.3	837.7	430.3	655.3	602.6	802	945.8	486.9	741.7
LCTR-1030C	610.5	815.6	959.2	492.7	750.3	690	918.3	1083	557.5	849.2
LCTR-1030D	671.6	897.2	1055.1	541.9	825.3	759	1010.1	1191.3	613.2	934.1
LCTR-1036B	636.4	854.4	1007.5	510.7	783.2	720	962.9	1138.7	578.4	887.4
LCTR-1036C	727.2	976.4	1151.4	583.4	895	822.7	1100.5	1301.4	660.8	1014
LCTR-1036D	799.9	1074.1	1266.6	641.7	984.4	904.9	1210.5	1431.5	726.8	1115.4
LCTR-1040B	707	949.3	1119.4	567.2	870.1	799.8	1069.9	1265.2	642.4	985.9
LCTR-1040C	808	1084.9	1279.4	648.3	994.4	914.1	1222.7	1446	734.2	1126.7
LCTR-1040D	888.8	1193.4	1407.3	713.1	1093.9	1005.5	1345	1590.6	807.6	1239.4
LCTR-1047B	855.3	1134.5	1329.4	695.9	1049	965.3	1275.6	1498.8	786.4	1185.7
LCTR-1047C	988.5	1305.9	1527	808	1211	1114.6	1467.2	1720.2	912.4	1367.7
LCTR-1047D	1085.5	1434.3	1677.2	887.3	1329.9	1224.1	1611.5	1889.4	1001.9	1502.1
LCTR-1052B	988.5	1305.9	1527	808	1211	1114.6	1467.2	1720.2	912.4	1367.7
LCTR-1052C	1085.5	1434.3	1677.2	887.3	1329.9	1224.1	1611.5	1889.4	1001.9	1502.1
LCTR-1052D	1240.6	1639.2	1916.8	1014	1519.9	1399	1841.7	2159.3	1145.1	1716.7
LCTR-1060B	1120.9	1488.4	1745	910.9	1375.1	1265.2	1673.8	1967.7	1029.5	1554.6
LCTR-1060C	1231.8	1635.6	1917.5	1001	1511.1	1390.4	1839.4	2162.3	1131.4	1708.4
LCTR-1060D	1408.4	1870.1	2192.4	1144.6	1727.8	1589.8	2103.1	2472.2	1293.7	1953.4
LCTR-1077B	1396.8	1850.2	2166.4	1138.3	1712.4	1575.9	2079.8	2441.8	1286	1935.1
LCTR-1077C	1596.6	2114.9	2476.4	1301.1	1957.3	1801.3	2377.3	2791.1	1469.9	2211.9
LCTR-1077D	1755.2	2325	2722.4	1430.3	2151.8	1980.3	2613.5	3068.4	1616	2431.6
LCTR-1082B	1475.6	1965.5	2308	1194.8	1811.8	1666.6	2211.6	2604.2	1351.2	2049.6
LCTR-1082C	1684.2	2233.8	2617.2	1370.5	2065.5	1900.6	2511.5	2950.6	1548.7	2334.6
LCTR-1082D	1850.7	2454.6	2876.1	1505.9	2269.6	2088.5	2759.9	3242.4	1701.7	2565.4
LCTR-1090B	1684.2	2233.8	2617.2	1370.5	2065.5	1900.6	2511.5	2950.6	1548.7	2334.6
LCTR-1090C	1850.7	2454.6	2876.1	1505.9	2269.6	2088.5	2759.9	3242.4	1701.7	2565.4
LCTR-1090D	1992.5	2642.8	3096.6	1621.2	2443.6	2248.5	2971.4	3491.1	1832	2762
LCTR-1105B	1981.5	2611.7	3050.3	1624.3	2426	2233.4	2933.1	3434.6	1833.4	2738.9
LCTR-1105C	2178.4	2871.5	3353.7	1785.5	2667.1	2455.4	3224.9	3776.4	2015.4	3011.2
LCTR-1105D	2344.8	3090.4	3609.2	1922.1	2870.7	2642.8	3470.7	4064	2169.6	3240.9

STD-201RS Table 3a - IP Units - Cooling Towers (CT)

Condition Reference #	31	32	33	34	35	36	37	38	39	40
Wet Bulb °F	80	80	80	80	80	85	85	85	85	85
Range °F	10	10	10	15	15	10	10	10	15	15
Approach °F	7	10	12	7	12	7	10	12	7	12
Inlet Water Temperature °F	97	100	102	102	107	102	105	107	107	112
Outlet Water Temperature °F	87	90	92	87	92	92	95	97	92	97
	GPM									
LCTR-1011B	249.4	335.8	397.4	199.3	308.1	283.1	382.1	452.2	226.8	351.7
LCTR-1011C	295.7	398.1	471.2	236.3	365.3	335.6	452.9	536.1	268.9	416.9
LCTR-1011D	339.6	456.9	540.7	271.5	419.5	385.4	519.9	615.2	308.9	478.7
LCTR-1012B	304.8	408.5	482.4	244.8	376.1	345.6	464.4	548.3	278.3	428.8
LCTR-1012C	361.7	484.7	572.4	290.5	446.3	410.1	551	650.5	330.3	508.8
LCTR-1012D	413.5	553.9	654	332.2	510.1	468.8	629.6	743.3	377.7	581.5
LCTR-1016B	361.7	484.7	572.4	290.5	446.3	410.1	551	650.5	330.3	508.8
LCTR-1016C	413.5	553.9	654	332.2	510.1	468.8	629.6	743.3	377.7	581.5
LCTR-1016D	454.8	609.3	719.4	365.5	561.1	515.7	692.6	817.6	415.5	639.7
LCTR-1018B	419.5	560.9	661.6	337.8	517.3	475.4	637.3	751.5	383.9	589.4
LCTR-1018C	479	640.6	755.5	385.7	590.7	542.9	727.8	858.3	438.3	673.1
LCTR-1018D	525.7	702.9	829	423.3	648.2	595.8	798.6	941.7	481.1	738.6
LCTR-1021B	474.9	637	752.6	381	586.1	538.6	724.2	855.5	433.3	668.3
LCTR-1021C	528.1	709.6	839.2	422.9	652.1	599.2	807.2	954.4	481.1	743.9
LCTR-1021D	579.7	778.9	921	464.2	715.8	657.7	885.9	1047.4	528.1	816.5
LCTR-1022B	528.1	709.6	839.2	422.9	652.1	599.2	807.2	954.4	481.1	743.9
LCTR-1022C	579.7	778.9	921	464.2	715.8	657.7	885.9	1047.4	528.1	816.5
LCTR-1022D	662.1	889.7	1052	530.2	817.6	751.2	1011.9	1196.4	603.2	932.6
LCTR-1025B	564.9	758.2	896	452.9	697.3	640.7	862.1	1018.7	515.1	795.2
LCTR-1025C	644.8	865.5	1022.8	517	796	731.4	984.1	1162.9	588	907.8
LCTR-1025D	709.3	952	1125.1	568.7	875.5	804.5	1082.5	1279.2	646.8	998.5
LCTR-1030B	681.9	907.4	1067.4	552.3	839.7	772.1	1029.8	1211.2	627	955.8
LCTR-1030C	780.8	1039	1222.3	632.3	961.4	884	1179.1	1386.9	717.9	1094.4
LCTR-1030D	858.9	1142.9	1344.5	695.5	1057.6	972.4	1297	1525.6	789.7	1203.9
LCTR-1036B	815.6	1090.7	1286.5	656.6	1005.7	924.4	1239.2	1461.5	746.2	1146
LCTR-1036C	931.9	1246.5	1470.4	750.2	1149.2	1056.3	1416.2	1670.4	852.7	1309.6
LCTR-1036D	1025.1	1371.1	1617.4	825.2	1264.1	1161.9	1557.9	1837.5	937.9	1440.6
LCTR-1040B	906.1	1211.8	1429.5	729.4	1117.3	1027	1376.9	1624	829	1273.3
LCTR-1040C	1035.5	1385	1633.7	833.6	1276.9	1173.7	1573.6	1856	947.4	1455.2
LCTR-1040D	1139	1523.5	1797.1	917	1404.6	1291	1731	2041.6	1042.1	1600.7
LCTR-1047B	1090.7	1441.2	1689.2	890.7	1340.6	1233.2	1633.1	1913.8	1009.9	1523.7
LCTR-1047C	1258.5	1656.3	1937.3	1032.7	1545.3	1421.8	1875.3	2193	1170	1754.9
LCTR-1047D	1382.2	1819.2	2127.8	1134	1697.1	1561.5	2059.7	2408.8	1284.8	1927.4
LCTR-1052B	1258.5	1656.3	1937.3	1032.7	1545.3	1421.8	1875.3	2193	1170	1754.9
LCTR-1052C	1382.2	1819.2	2127.8	1134	1697.1	1561.5	2059.7	2408.8	1284.8	1927.4
LCTR-1052D	1579.6	2079.1	2431.8	1296	1939.5	1784.5	2353.9	2752.9	1468.4	2202.7
LCTR-1060B	1430	1891.5	2218.1	1166.4	1758.1	1617.1	2143.8	2513.6	1322.7	1998.7
LCTR-1060C	1571.4	2078.6	2437.5	1281.7	1932	1777.1	2355.8	2762.2	1453.5	2196.4
LCTR-1060D	1796.8	2376.5	2786.8	1465.6	2209	2031.9	2693.5	3158	1662	2511.2
LCTR-1077B	1780.2	2349	2751.2	1456.2	2187.3	2012.2	2661	3116.1	1650.6	2485.4
LCTR-1077C	2034.9	2685.1	3144.8	1664.5	2500.2	2300	3041.7	3562	1886.7	2840.9
LCTR-1077D	2237.1	2951.9	3457.3	1829.9	2748.6	2528.6	3343.9	3915.9	2074.2	3123.2
LCTR-1082B	1884.9	2500.8	2937.4	1531.7	2319.2	2132.8	2836.3	3331	1738.1	2638.3
LCTR-1082C	2147.6	2837.4	3325.3	1754.1	2639.6	2428.1	3215.1	3767.4	1988.8	3000.1
LCTR-1082D	2359.9	3118	3654.3	1927.4	2900.5	2668.1	3533.1	4140.2	2185.3	3296.7
LCTR-1090B	2147.6	2837.4	3325.3	1754.1	2639.6	2428.1	3215.1	3767.4	1988.8	3000.1
LCTR-1090C	2359.9	3118	3654.3	1927.4	2900.5	2668.1	3533.1	4140.2	2185.3	3296.7
LCTR-1090D	2540.8	3357	3934.5	2075	3122.8	2872.6	3804	4457.6	2352.7	3549.4
LCTR-1105B	2520.6	3309.6	3866.3	2074.1	3093.1	2846.2	3745.2	4374.6	2348.8	3511
LCTR-1105C	2771.1	3638.8	4251	2280.1	3400.6	3129.2	4117.8	4810	2582.1	3860.1
LCTR-1105D	2982.6	3916.1	4574.7	2454.4	3660	3367.9	4431.5	5176.1	2779.5	4154.5

STD-201RS Table 3a - IP Units - Cooling Towers (CT)

Condition Reference #	41	42	43	44	45		46	47	48	49
Wet Bulb °F	90	90	90	90	90		69.8	78	80.6	82.4
Range °F	10	10	10	15	15		9	10	9	9
Approach °F	7	10	12	7	12		10.8	7	9	7.2
Inlet Water Temperature °F	107	110	112	112	117		89.6	95	98.6	98.6
Outlet Water Temperature °F	97	100	102	97	102		80.6	85	89.6	89.6
	GPM									
LCTR-1011B	322.4	435.5	515.5	259	401.4		300.4	236.4	333.1	288.9
LCTR-1011C	382.2	516.3	611.1	307.1	476		356.2	280.3	395	342.5
LCTR-1011D	438.8	592.5	701.2	352.7	546.4		408.8	321.8	453.3	393.3
LCTR-1012B	393.2	528.8	624.5	317.5	489		365.4	289	405.3	352.3
LCTR-1012C	466.6	627.4	740.8	376.8	580.2		433.5	342.9	480.8	418
LCTR-1012D	533.3	716.9	846.4	430.9	663.1		495.4	392	549.5	477.8
LCTR-1016B	466.6	627.4	740.8	376.8	580.2		433.5	342.9	480.8	418
LCTR-1016C	533.3	716.9	846.4	430.9	663.1		495.4	392	549.5	477.8
LCTR-1016D	586.7	788.6	931	474	729.5		545	431.3	604.5	525.6
LCTR-1018B	540.6	725.3	855.4	437.8	671.9		501.5	397.8	556.4	484.3
LCTR-1018C	617.4	828.3	976.9	499.9	767.2		572.8	454.3	635.4	553.1
LCTR-1018D	677.5	908.8	1071.8	548.6	841.9		628.5	498.5	697.2	606.9
LCTR-1021B	612.9	824.9	974.5	494.5	762.3		569.8	450.2	631.9	549.1
LCTR-1021C	682.1	919.7	1087.6	549.2	848.9		634.9	500.6	704.1	611.2
LCTR-1021D	748.7	1009.4	1193.5	602.9	931.7		696.8	549.5	772.7	670.9
LCTR-1022B	682.1	919.7	1087.6	549.2	848.9		634.9	500.6	704.1	611.2
LCTR-1022C	748.7	1009.4	1193.5	602.9	931.7		696.8	549.5	772.7	670.9
LCTR-1022D	855.1	1153	1363.3	688.5	1064.2		795.9	627.6	882.6	766.3
LCTR-1025B	729.2	982	1160.5	587.9	907.2		678.2	535.5	752.1	653.4
LCTR-1025C	832.4	1121	1324.8	671.1	1035.6		774.2	611.3	858.6	745.9
LCTR-1025D	915.6	1233.2	1457.3	738.1	1139.1		851.6	672.4	944.5	820.4
LCTR-1030B	877	1170.6	1377	714.3	1088.4		810.9	647	899.8	785.4
LCTR-1030C	1004.2	1340.4	1576.8	817.9	1246.2		928.5	740.8	1030.3	899.3
LCTR-1030D	1104.6	1474.5	1734.5	899.6	1370.8		1021.3	814.9	1133.4	989.3
LCTR-1036B	1051.1	1410.4	1663.5	851	1306.3		975.2	773.4	1081.8	941.7
LCTR-1036C	1201.2	1611.9	1901.3	972.4	1492.9		1114.6	883.8	1236.4	1076.1
LCTR-1036D	1321.3	1773.1	2091.5	1069.6	1642.2		1226	972.1	1360	1183.7
LCTR-1040B	1167.8	1567.1	1848.5	945.4	1451.4		1083.6	859.2	1202.1	1046.2
LCTR-1040C	1334.7	1791	2112.6	1080.5	1658.8		1238.4	982	1373.8	1195.7
LCTR-1040D	1468.1	1970.1	2323.9	1188.5	1824.7		1362.3	1080.2	1511.1	1315.3
LCTR-1047B	1398.6	1853.6	2172.3	1148.9	1732.4		1286.8	1035.5	1428.7	1252
LCTR-1047C	1611.2	2126.6	2487.1	1329.9	1993.6		1478.1	1195.3	1641.7	1441.8
LCTR-1047D	1769.5	2335.8	2731.8	1460.4	2189.6		1623.5	1312.7	1803.1	1583.5
LCTR-1052B	1611.2	2126.6	2487.1	1329.9	1993.6		1478.1	1195.3	1641.7	1441.8
LCTR-1052C	1769.5	2335.8	2731.8	1460.4	2189.6		1623.5	1312.7	1803.1	1583.5
LCTR-1052D	2022.3	2669.5	3122.1	1669	2502.4		1855.4	1500.2	2060.7	1809.7
LCTR-1060B	1834.5	2433.8	2853.8	1505	2272.9		1689.1	1357.5	1875.2	1642.3
LCTR-1060C	2015.9	2674.5	3136.1	1653.8	2497.7		1856.2	1491.8	2060.7	1804.7
LCTR-1060D	2304.9	3057.8	3585.4	1891	2855.8		2122.2	1705.7	2356	2063.5
LCTR-1077B	2281.5	3019.4	3536	1877.2	2825		2097	1690.4	2328.5	2042.1
LCTR-1077C	2607.9	3451.4	4041.9	2145.7	3229.1		2397.1	1932.2	2661.7	2334.2
LCTR-1077D	2867	3794.3	4443.5	2358.9	3550		2635.2	2124.1	2926.1	2566.1
LCTR-1082B	2421.1	3222.2	3784.5	1978.8	3002.3		2234.1	1788.8	2479.7	2167.9
LCTR-1082C	2753.8	3649	4276.2	2262.3	3410.9		2533.4	2039	2812.8	2465.1
LCTR-1082D	3026	4010	4699.3	2485.8	3748.1		2784	2240.5	3091	2708.8
LCTR-1090B	2753.8	3649	4276.2	2262.3	3410.9		2533.4	2039	2812.8	2465.1
LCTR-1090C	3026	4010	4699.3	2485.8	3748.1		2784	2240.5	3091	2708.8
LCTR-1090D	3258	4317.5	5059.7	2676.3	4035.5		2997.4	2412.2	3328	2916.4
LCTR-1105B	3223.8	4245.1	4958.7	2668.5	3986.7		2952.5	2394.4	3279.9	2884.3
LCTR-1105C	3544.3	4667.5	5452.3	2933.6	4383.2		3246.3	2632.4	3606.2	3171.1
LCTR-1105D	3814.6	5022.9	5867.2	3157.7	4717.4		3493.6	2833.3	3880.9	3412.9

STD-201RS Table 3b - SI Units - Cooling Towers (CT)

Condition Reference #	1	2	3	4	5	6	7	8	9	10
Wet Bulb °C	10	10	10	10	10	13	13	13	13	13
Range °C	6	6	6	8	8	6	6	6	8	8
Approach °C	4	6	7	4	7	4	6	7	4	7
Inlet Water Temperature °C	20	22	23	22	25	23	25	26	25	28
Outlet Water Temperature °C	14	16	17	14	17	17	19	20	17	20
	L/S									
LCTR-1011B	7.5	10.6	12.2	6.4	10.1	8.5	11.9	13.8	7.2	11.4
LCTR-1011C	8.9	12.5	14.5	7.6	11.9	10.1	14.1	16.3	8.5	13.5
LCTR-1011D	10.3	14.4	16.6	8.7	13.7	11.5	16.2	18.7	9.8	15.5
LCTR-1012B	9.3	12.9	14.9	7.8	12.3	10.4	14.6	16.8	8.8	13.9
LCTR-1012C	11	15.4	17.7	9.3	14.6	12.4	17.3	19.9	10.5	16.5
LCTR-1012D	12.6	17.6	20.2	10.7	16.7	14.1	19.8	22.8	12	18.9
LCTR-1016B	11	15.4	17.7	9.3	14.6	12.4	17.3	19.9	10.5	16.5
LCTR-1016C	12.6	17.6	20.2	10.7	16.7	14.1	19.8	22.8	12	18.9
LCTR-1016D	13.8	19.3	22.2	11.7	18.4	15.5	21.7	25	13.2	20.8
LCTR-1018B	12.8	17.8	20.5	10.9	17	14.4	20.1	23.1	12.2	19.2
LCTR-1018C	14.6	20.3	23.4	12.4	19.4	16.4	22.9	26.3	14	21.9
LCTR-1018D	16	22.3	25.7	13.6	21.3	18	25.1	28.9	15.3	24
LCTR-1021B	14.4	20.2	23.2	12.2	19.2	16.2	22.7	26.1	13.8	21.7
LCTR-1021C	16	22.4	25.8	13.5	21.3	18	25.2	29.1	15.3	24.1
LCTR-1021D	17.5	24.6	28.3	14.9	23.4	19.7	27.7	31.9	16.7	26.5
LCTR-1022B	16	22.4	25.8	13.5	21.3	18	25.2	29.1	15.3	24.1
LCTR-1022C	17.5	24.6	28.3	14.9	23.4	19.7	27.7	31.9	16.7	26.5
LCTR-1022D	20	28.1	32.4	17	26.8	22.6	31.6	36.5	19.1	30.2
LCTR-1025B	17.1	24	27.6	14.5	22.9	19.3	27	31.1	16.4	25.8
LCTR-1025C	19.5	27.4	31.5	16.6	26.1	22	30.8	35.5	18.7	29.5
LCTR-1025D	21.5	30.1	34.7	18.2	28.7	24.2	33.9	39.1	20.5	32.4
LCTR-1030B	20.9	29	33.3	17.8	27.7	23.5	32.6	37.4	20.1	31.3
LCTR-1030C	23.9	33.2	38.1	20.4	31.7	26.9	37.3	42.8	23	35.8
LCTR-1030D	26.3	36.5	41.9	22.4	34.9	29.6	41	47.1	25.3	39.4
LCTR-1036B	24.8	34.6	39.8	21.1	33.1	27.9	39	44.8	23.8	37.3
LCTR-1036C	28.4	39.6	45.5	24.1	37.8	31.9	44.5	51.3	27.1	42.6
LCTR-1036D	31.2	43.5	50.1	26.5	41.6	35.1	49	56.4	29.9	46.9
LCTR-1040B	27.6	38.5	44.2	23.4	36.7	31	43.3	49.8	26.4	41.4
LCTR-1040C	31.5	44	50.6	26.8	42	35.4	49.5	56.9	30.2	47.4
LCTR-1040D	34.7	48.4	55.6	29.5	46.2	39	54.4	62.6	33.2	52.1
LCTR-1047B	33.7	46.4	53.1	28.9	44.5	37.8	52.1	59.6	32.5	50.1
LCTR-1047C	39.1	53.6	61.2	33.6	51.5	43.8	60.1	68.7	37.8	57.9
LCTR-1047D	42.9	58.8	67.2	36.9	56.5	48.1	66	75.4	41.5	63.6
LCTR-1052B	39.1	53.6	61.2	33.6	51.5	43.8	60.1	68.7	37.8	57.9
LCTR-1052C	42.9	58.8	67.2	36.9	56.5	48.1	66	75.4	41.5	63.6
LCTR-1052D	49.1	67.2	76.8	42.2	64.6	55	75.5	86.2	47.4	72.7
LCTR-1060B	44.1	60.8	69.6	37.8	58.3	49.5	68.3	78.2	42.5	65.7
LCTR-1060C	48.5	66.8	76.5	41.6	64.1	54.4	75.1	86	46.7	72.2
LCTR-1060D	55.5	76.4	87.5	47.5	73.3	62.3	85.9	98.3	53.5	82.5
LCTR-1077B	55.1	75.8	86.6	47.3	72.7	61.8	85.1	97.3	53.2	81.9
LCTR-1077C	63	86.6	99	54.1	83.1	70.7	97.2	111.2	60.8	93.6
LCTR-1077D	69.3	95.2	108.8	59.5	91.4	77.7	106.9	122.3	66.8	102.9
LCTR-1082B	58	80.1	91.8	49.6	76.8	65.1	90.1	103.3	55.7	86.5
LCTR-1082C	66.4	91.4	104.5	57	87.7	74.5	102.6	117.4	64	98.7
LCTR-1082D	73	100.4	114.9	62.6	96.3	81.9	112.8	129	70.3	108.5
LCTR-1090B	66.4	91.4	104.5	57	87.7	74.5	102.6	117.4	64	98.7
LCTR-1090C	73	100.4	114.9	62.6	96.3	81.9	112.8	129	70.3	108.5
LCTR-1090D	78.5	108.1	123.7	67.4	103.7	88.1	121.4	138.9	75.7	116.8
LCTR-1105B	78.5	107.3	122.4	67.7	103.2	88	120.4	137.4	76	116.1
LCTR-1105C	86.3	118	134.6	74.4	113.5	96.8	132.4	151.1	83.6	127.7
LCTR-1105D	92.9	127	144.9	80.1	122.2	104.1	142.5	162.6	90	137.4

STD-201RS Table 3b - SI Units - Cooling Towers (CT)

Condition Reference #	11	12	13	14	15	16	17	18	19	20
Wet Bulb °C	16	16	16	16	16	18	18	18	18	18
Range °C	6	6	6	8	8	6	6	6	8	8
Approach °C	4	6	7	4	7	4	6	7	4	7
Inlet Water Temperature °C	26	28	29	28	31	28	30	31	30	33
Outlet Water Temperature °C	20	22	23	20	23	22	24	25	22	25
	L/S									
LCTR-1011B	9.6	13.5	15.6	8.1	12.9	10.4	14.7	17	8.9	14.1
LCTR-1011C	11.4	16	18.5	9.6	15.3	12.4	17.4	20.1	10.5	16.7
LCTR-1011D	13.1	18.4	21.2	11.1	17.6	14.2	20	23.1	12.1	19.2
LCTR-1012B	11.8	16.5	19	10	15.8	12.8	17.9	20.7	10.9	17.2
LCTR-1012C	14	19.6	22.5	11.9	18.7	15.2	21.3	24.5	12.9	20.4
LCTR-1012D	16	22.4	25.8	13.6	21.4	17.4	24.3	28	14.8	23.4
LCTR-1016B	14	19.6	22.5	11.9	18.7	15.2	21.3	24.5	12.9	20.4
LCTR-1016C	16	22.4	25.8	13.6	21.4	17.4	24.3	28	14.8	23.4
LCTR-1016D	17.6	24.6	28.3	15	23.6	19.1	26.8	30.8	16.3	25.7
LCTR-1018B	16.2	22.7	26.1	13.8	21.8	17.7	24.7	28.4	15.1	23.7
LCTR-1018C	18.5	25.9	29.8	15.8	24.8	20.2	28.2	32.4	17.2	27.1
LCTR-1018D	20.3	28.4	32.7	17.3	27.3	22.1	30.9	35.6	18.9	29.7
LCTR-1021B	18.3	25.7	29.6	15.6	24.6	19.9	28	32.2	17	26.8
LCTR-1021C	20.3	28.6	33	17.3	27.4	22.1	31.1	35.9	18.8	29.8
LCTR-1021D	22.3	31.4	36.2	19	30	24.3	34.1	39.4	20.7	32.7
LCTR-1022B	20.3	28.6	33	17.3	27.4	22.1	31.1	35.9	18.8	29.8
LCTR-1022C	22.3	31.4	36.2	19	30	24.3	34.1	39.4	20.7	32.7
LCTR-1022D	25.5	35.8	41.3	21.7	34.3	27.8	39	45	23.6	37.4
LCTR-1025B	21.8	30.6	35.2	18.5	29.3	23.7	33.3	38.4	20.2	31.9
LCTR-1025C	24.9	34.9	40.2	21.1	33.4	27.1	38	43.8	23	36.4
LCTR-1025D	27.4	38.4	44.2	23.3	36.7	29.8	41.8	48.2	25.3	40.1
LCTR-1030B	26.5	36.8	42.3	22.7	35.4	28.8	40	46	24.7	38.5
LCTR-1030C	30.3	42.2	48.4	26	40.5	33	45.8	52.7	28.3	44.1
LCTR-1030D	33.4	46.4	53.3	28.6	44.6	36.3	50.4	57.9	31.1	48.5
LCTR-1036B	31.6	44.1	50.7	26.9	42.3	34.3	48	55.2	29.3	46.1
LCTR-1036C	36.1	50.4	58	30.7	48.3	39.2	54.8	63.1	33.5	52.6
LCTR-1036D	39.7	55.4	63.8	33.8	53.1	43.1	60.3	69.4	36.8	57.9
LCTR-1040B	35.1	49	56.4	29.9	47	38.1	53.3	61.3	32.5	51.2
LCTR-1040C	40.1	56	64.4	34.1	53.7	43.6	60.9	70.1	37.2	58.5
LCTR-1040D	44.1	61.6	70.9	37.6	59.1	47.9	67	77.1	40.9	64.3
LCTR-1047B	42.7	58.8	67.3	36.7	56.7	46.3	63.9	73.1	39.9	61.7
LCTR-1047C	49.4	67.8	77.5	42.7	65.5	53.6	73.6	84.1	46.4	71.2
LCTR-1047D	54.2	74.4	85.1	46.8	71.9	58.9	80.8	92.4	50.9	78.2
LCTR-1052B	49.4	67.8	77.5	42.7	65.5	53.6	73.6	84.1	46.4	71.2
LCTR-1052C	54.2	74.4	85.1	46.8	71.9	58.9	80.8	92.4	50.9	78.2
LCTR-1052D	62	85.1	97.2	53.5	82.2	67.3	92.4	105.6	58.2	89.3
LCTR-1060B	55.9	77.1	88.3	48.1	74.3	60.7	83.8	96	52.3	80.9
LCTR-1060C	61.4	84.7	97.1	52.8	81.7	66.7	92	105.5	57.4	88.8
LCTR-1060D	70.2	96.9	111	60.4	93.4	76.2	105.2	120.6	65.7	101.6
LCTR-1077B	69.7	95.9	109.8	60.1	92.6	75.7	104.2	119.2	65.3	100.7
LCTR-1077C	79.7	109.7	125.5	68.7	105.8	86.5	119.1	136.3	74.6	115.1
LCTR-1077D	87.6	120.6	137.9	75.5	116.3	95.1	130.9	149.8	82.1	126.5
LCTR-1082B	73.4	101.7	116.7	63	97.9	79.8	110.5	126.8	68.5	106.5
LCTR-1082C	84	115.8	132.5	72.3	111.6	91.2	125.7	144	78.6	121.4
LCTR-1082D	92.3	127.2	145.7	79.5	122.7	100.2	138.2	158.2	86.4	133.4
LCTR-1090B	84	115.8	132.5	72.3	111.6	91.2	125.7	144	78.6	121.4
LCTR-1090C	92.3	127.2	145.7	79.5	122.7	100.2	138.2	158.2	86.4	133.4
LCTR-1090D	99.4	137	156.8	85.5	132.1	107.9	148.8	170.4	93	143.7
LCTR-1105B	99.1	135.7	154.9	85.8	131.2	107.6	147.2	168.1	93.2	142.6
LCTR-1105C	109	149.2	170.3	94.3	144.2	118.2	161.9	184.9	102.4	156.8
LCTR-1105D	117.3	160.5	183.3	101.5	155.2	127.3	174.2	199	110.3	168.7

STD-201RS Table 3b - SI Units - Cooling Towers (CT)

Condition Reference #	21	22	23	24	25	26	27	28	29	30
Wet Bulb °C	21	21	21	21	21	24	24	24	24	24
Range °C	6	6	6	8	8	6	6	6	8	8
Approach °C	4	6	7	4	7	4	6	7	4	7
Inlet Water Temperature °C	31	33	34	33	36	34	36	37	36	39
Outlet Water Temperature °C	25	27	28	25	28	28	30	31	28	31
	L/S									
LCTR-1011B	11.9	16.8	19.4	10.1	16.1	13.6	19.2	22.1	11.6	18.4
LCTR-1011C	14.1	19.9	22.9	12	19.1	16.1	22.7	26.2	13.7	21.8
LCTR-1011D	16.2	22.8	26.3	13.8	21.9	18.5	26.1	30.1	15.8	25.1
LCTR-1012B	14.6	20.4	23.5	12.4	19.6	16.6	23.3	26.9	14.2	22.5
LCTR-1012C	17.3	24.2	27.9	14.8	23.3	19.8	27.7	31.9	16.9	26.7
LCTR-1012D	19.8	27.7	31.9	16.9	26.6	22.6	31.6	36.5	19.3	30.5
LCTR-1016B	17.3	24.2	27.9	14.8	23.3	19.8	27.7	31.9	16.9	26.7
LCTR-1016C	19.8	27.7	31.9	16.9	26.6	22.6	31.6	36.5	19.3	30.5
LCTR-1016D	21.8	30.5	35.1	18.6	29.3	24.8	34.8	40.1	21.2	33.5
LCTR-1018B	20.1	28.1	32.3	17.2	27	22.9	32	36.9	19.6	30.9
LCTR-1018C	22.9	32.1	36.9	19.6	30.9	26.2	36.6	42.2	22.4	35.3
LCTR-1018D	25.2	35.2	40.5	21.5	33.9	28.7	40.2	46.3	24.6	38.7
LCTR-1021B	22.7	31.8	36.7	19.4	30.6	25.9	36.4	41.9	22.2	35
LCTR-1021C	25.2	35.4	40.9	21.5	34.1	28.8	40.5	46.8	24.6	39
LCTR-1021D	27.7	38.9	44.9	23.6	37.4	31.6	44.5	51.3	27	42.8
LCTR-1022B	25.2	35.4	40.9	21.5	34.1	28.8	40.5	46.8	24.6	39
LCTR-1022C	27.7	38.9	44.9	23.6	37.4	31.6	44.5	51.3	27	42.8
LCTR-1022D	31.6	44.4	51.3	26.9	42.7	36.1	50.8	58.6	30.8	48.9
LCTR-1025B	27	37.9	43.7	23	36.4	30.8	43.3	49.9	26.3	41.7
LCTR-1025C	30.8	43.2	49.9	26.3	41.6	35.2	49.4	57	30.1	47.6
LCTR-1025D	33.9	47.6	54.9	28.9	45.7	38.7	54.4	62.7	33.1	52.4
LCTR-1030B	32.7	45.5	52.3	28.1	43.9	37.3	51.9	59.6	32.1	50.2
LCTR-1030C	37.5	52.1	59.9	32.2	50.3	42.7	59.4	68.3	36.8	57.5
LCTR-1030D	41.2	57.3	65.9	35.4	55.3	47	65.4	75.1	40.4	63.2
LCTR-1036B	39	54.6	62.9	33.4	52.5	44.6	62.3	71.8	38.2	60.1
LCTR-1036C	44.6	62.4	71.8	38.1	60.1	50.9	71.2	82	43.6	68.7
LCTR-1036D	49.1	68.6	79	42	66.1	56	78.3	90.2	48	75.6
LCTR-1040B	43.4	60.6	69.8	37.1	58.4	49.5	69.2	79.7	42.4	66.8
LCTR-1040C	49.6	69.3	79.8	42.4	66.7	56.6	79.1	91.1	48.5	76.3
LCTR-1040D	54.5	76.2	87.8	46.6	73.4	62.3	87	100.3	53.3	84
LCTR-1047B	52.6	72.5	83	45.4	70.2	59.9	82.6	94.6	51.8	80.1
LCTR-1047C	60.8	83.5	95.4	52.7	80.9	69.2	95	108.6	60	92.3
LCTR-1047D	66.8	91.7	104.8	57.8	88.9	76	104.3	119.3	65.9	101.3
LCTR-1052B	60.8	83.5	95.4	52.7	80.9	69.2	95	108.6	60	92.3
LCTR-1052C	66.8	91.7	104.8	57.8	88.9	76	104.3	119.3	65.9	101.3
LCTR-1052D	76.3	104.8	119.8	66.1	101.6	86.8	119.2	136.3	75.3	115.8
LCTR-1060B	68.9	95.1	109	59.4	92	78.5	108.3	124.2	67.8	105
LCTR-1060C	75.7	104.5	119.8	65.3	101.1	86.2	119	136.4	74.5	115.4
LCTR-1060D	86.6	119.5	136.9	74.7	115.6	98.6	136.1	156	85.2	131.9
LCTR-1077B	85.9	118.2	135.4	74.2	114.5	97.8	134.6	154.1	84.7	130.6
LCTR-1077C	98.2	135.2	154.7	84.9	130.9	111.7	153.8	176.1	96.8	149.3
LCTR-1077D	107.9	148.6	170.1	93.3	143.9	122.8	169.1	193.6	106.4	164.1
LCTR-1082B	90.6	125.6	144.1	78	121.3	103.3	143.1	164.3	89.1	138.6
LCTR-1082C	103.5	142.7	163.5	89.4	138.2	117.9	162.5	186.2	102	157.7
LCTR-1082D	113.8	156.9	179.7	98.2	151.8	129.5	178.6	204.6	112.1	173.2
LCTR-1090B	103.5	142.7	163.5	89.4	138.2	117.9	162.5	186.2	102	157.7
LCTR-1090C	113.8	156.9	179.7	98.2	151.8	129.5	178.6	204.6	112.1	173.2
LCTR-1090D	122.5	168.9	193.4	105.8	163.5	139.5	192.3	220.3	120.6	186.5
LCTR-1105B	121.9	166.9	190.7	105.8	162	138.6	189.8	216.9	120.6	184.6
LCTR-1105C	134	183.5	209.6	116.3	178.1	152.4	208.7	238.4	132.6	203
LCTR-1105D	144.3	197.5	225.6	125.2	191.7	164.1	224.6	256.6	142.7	218.5

STD-201RS Table 3b - SI Units - Cooling Towers (CT)

Condition Reference #	31	32	33	34	35	36	37	38	39	40
Wet Bulb °C	27	27	27	27	27	29	29	29	29	29
Range °C	6	6	6	8	8	6	6	6	8	8
Approach °C	4	6	7	4	7	4	6	7	4	7
Inlet Water Temperature °C	37	39	40	39	42	39	41	42	41	44
Outlet Water Temperature °C	31	33	34	31	34	33	35	36	33	36
	L/S									
LCTR-1011B	15.6	22	25.4	13.3	21.2	17.1	24.1	27.8	14.6	23.2
LCTR-1011C	18.5	26	30.1	15.8	25.1	20.3	28.6	33	17.3	27.6
LCTR-1011D	21.2	29.9	34.5	18.1	28.8	23.3	32.8	37.9	19.9	31.6
LCTR-1012B	19.1	26.7	30.8	16.3	25.8	20.9	29.3	33.8	17.9	28.3
LCTR-1012C	22.6	31.7	36.5	19.4	30.6	24.8	34.7	40.1	21.3	33.6
LCTR-1012D	25.9	36.2	41.8	22.2	35	28.3	39.7	45.8	24.3	38.4
LCTR-1016B	22.6	31.7	36.5	19.4	30.6	24.8	34.7	40.1	21.3	33.6
LCTR-1016C	25.9	36.2	41.8	22.2	35	28.3	39.7	45.8	24.3	38.4
LCTR-1016D	28.5	39.9	45.9	24.4	38.5	31.2	43.7	50.4	26.7	42.2
LCTR-1018B	26.2	36.7	42.3	22.5	35.5	28.8	40.2	46.3	24.7	38.9
LCTR-1018C	30	41.9	48.3	25.7	40.5	32.8	45.9	52.9	28.2	44.4
LCTR-1018D	32.9	46	52.9	28.2	44.4	36	50.4	58	31	48.8
LCTR-1021B	29.7	41.7	48.1	25.4	40.2	32.6	45.7	52.7	27.9	44.2
LCTR-1021C	33	46.4	53.6	28.2	44.8	36.2	50.9	58.8	31	49.2
LCTR-1021D	36.3	50.9	58.8	31	49.1	39.7	55.9	64.5	34	54
LCTR-1022B	33	46.4	53.6	28.2	44.8	36.2	50.9	58.8	31	49.2
LCTR-1022C	36.3	50.9	58.8	31	49.1	39.7	55.9	64.5	34	54
LCTR-1022D	41.4	58.2	67.2	35.4	56.1	45.4	63.8	73.7	38.8	61.6
LCTR-1025B	35.3	49.6	57.2	30.2	47.9	38.7	54.4	62.7	33.2	52.5
LCTR-1025C	40.3	56.6	65.3	34.5	54.6	44.2	62.1	71.6	37.9	60
LCTR-1025D	44.4	62.3	71.8	37.9	60.1	48.6	68.3	78.8	41.6	66
LCTR-1030B	42.7	59.3	68.2	36.8	57.5	46.7	65	74.7	40.3	63
LCTR-1030C	48.9	67.9	78.1	42.1	65.8	53.5	74.4	85.5	46.2	72.2
LCTR-1030D	53.8	74.7	85.9	46.3	72.4	58.9	81.8	94	50.8	79.4
LCTR-1036B	51	71.3	82.2	43.8	69	55.9	78.2	90	48	75.7
LCTR-1036C	58.3	81.5	93.9	50	78.8	63.9	89.3	102.9	54.9	86.5
LCTR-1036D	64.1	89.7	103.3	55	86.7	70.3	98.3	113.2	60.4	95.1
LCTR-1040B	56.7	79.3	91.3	48.6	76.6	62.1	86.8	100	53.3	84.1
LCTR-1040C	64.8	90.6	104.3	55.6	87.6	71	99.2	114.3	61	96.1
LCTR-1040D	71.3	99.6	114.8	61.1	96.3	78.1	109.2	125.8	67.1	105.7
LCTR-1047B	68.4	94.2	108	59.2	91.6	74.8	103.1	118.1	64.9	100.3
LCTR-1047C	78.9	108.3	123.9	68.6	105.5	86.3	118.4	135.4	75.1	115.4
LCTR-1047D	86.7	118.9	136	75.3	115.8	94.7	130	148.7	82.5	126.8
LCTR-1052B	78.9	108.3	123.9	68.6	105.5	86.3	118.4	135.4	75.1	115.4
LCTR-1052C	86.7	118.9	136	75.3	115.8	94.7	130	148.7	82.5	126.8
LCTR-1052D	99	135.9	155.5	86.1	132.4	108.3	148.6	169.9	94.3	144.9
LCTR-1060B	89.6	123.7	141.8	77.6	120.2	98	135.3	155.1	85	131.6
LCTR-1060C	98.5	135.9	155.8	85.3	132	107.7	148.7	170.4	93.4	144.6
LCTR-1060D	112.6	155.4	178.1	97.5	151	123.2	170	194.8	106.8	165.4
LCTR-1077B	111.6	153.6	175.9	96.8	149.4	122	167.9	192.3	106	163.6
LCTR-1077C	127.5	175.6	201	110.7	170.8	139.5	192	219.8	121.2	187
LCTR-1077D	140.2	193	221	121.6	187.7	153.3	211	241.6	133.2	205.5
LCTR-1082B	118.1	163.5	187.7	101.9	158.6	129.2	178.9	205.4	111.7	173.9
LCTR-1082C	134.6	185.5	212.5	116.6	180.3	147.2	202.9	232.4	127.7	197.5
LCTR-1082D	147.9	203.9	233.6	128.2	198.2	161.7	223	255.4	140.4	217
LCTR-1090B	134.6	185.5	212.5	116.6	180.3	147.2	202.9	232.4	127.7	197.5
LCTR-1090C	147.9	203.9	233.6	128.2	198.2	161.7	223	255.4	140.4	217
LCTR-1090D	159.2	219.5	251.5	138	213.4	174.1	240	275	151.1	233.7
LCTR-1105B	158.1	216.4	247.2	137.7	210.9	172.7	236.4	270.1	150.7	230.8
LCTR-1105C	173.8	237.9	271.8	151.4	231.9	189.9	259.9	297	165.7	253.7
LCTR-1105D	187.1	256	292.5	163	249.6	204.4	279.7	319.6	178.3	273.1

STD-201RS Table 3b - SI Units - Cooling Towers (CT)

Condition Reference #	41	42	43	44	45		46	47	48	49
Wet Bulb °C	32.2	32.2	32.2	32.2	32.2		21	25.56	27	28
Range °C	6	6	6	8	8		5	5.56	5	5
Approach °C	4	6	7	4	7		6	3.89	5	4
Inlet Water Temperature °C	42.2	44.2	45.2	44.2	47.2		32	35.00	37	37
Outlet Water Temperature °C	36.2	38.2	39.2	36.2	39.2		27	29.44	32	32
	L/S									
LCTR-1011B	19.9	28	32.3	17	27.1		19	14.9	21	18.2
LCTR-1011C	23.6	33.2	38.3	20.2	32.1		22.5	17.7	24.9	21.6
LCTR-1011D	27	38.1	44	23.2	36.8		25.8	20.3	28.6	24.8
LCTR-1012B	24.3	34	39.2	20.8	32.9		23.1	18.2	25.6	22.2
LCTR-1012C	28.8	40.3	46.5	24.7	39.1		27.3	21.6	30.3	26.4
LCTR-1012D	32.9	46.1	53.1	28.3	44.7		31.3	24.7	34.7	30.1
LCTR-1016B	28.8	40.3	46.5	24.7	39.1		27.3	21.6	30.3	26.4
LCTR-1016C	32.9	46.1	53.1	28.3	44.7		31.3	24.7	34.7	30.1
LCTR-1016D	36.2	50.7	58.4	31.1	49.1		34.4	27.2	38.1	33.2
LCTR-1018B	33.4	46.6	53.7	28.7	45.2		31.6	25.1	35.1	30.6
LCTR-1018C	38.1	53.2	61.3	32.8	51.6		36.1	28.7	40.1	34.9
LCTR-1018D	41.8	58.4	67.3	36	56.7		39.6	31.5	44	38.3
LCTR-1021B	37.8	53	61.1	32.4	51.4		35.9	28.4	39.9	34.6
LCTR-1021C	42	59.1	68.2	36	57.2		40.1	31.6	44.4	38.6
LCTR-1021D	46.2	64.9	74.9	39.6	62.8		44	34.7	48.8	42.3
LCTR-1022B	42	59.1	68.2	36	57.2		40.1	31.6	44.4	38.6
LCTR-1022C	46.2	64.9	74.9	39.6	62.8		44	34.7	48.8	42.3
LCTR-1022D	52.7	74.1	85.5	45.2	71.7		50.2	39.6	55.7	48.3
LCTR-1025B	45	63.1	72.8	38.6	61.1		42.8	33.8	47.5	41.2
LCTR-1025C	51.3	72	83.1	44	69.8		48.8	38.6	54.2	47.1
LCTR-1025D	56.5	79.2	91.4	48.4	76.7		53.7	42.4	59.6	51.8
LCTR-1030B	54.1	75.2	86.5	46.8	73.2		51.2	40.8	56.8	49.6
LCTR-1030C	62	86.1	99	53.6	83.8		58.6	46.7	65	56.7
LCTR-1030D	68.2	94.8	108.9	58.9	92.1		64.4	51.4	71.5	62.4
LCTR-1036B	64.8	90.6	104.4	55.8	87.9		61.5	48.8	68.3	59.4
LCTR-1036C	74.1	103.6	119.3	63.8	100.5		70.3	55.8	78	67.9
LCTR-1036D	81.5	113.9	131.3	70.1	110.5		77.3	61.3	85.8	74.7
LCTR-1040B	72	100.7	116	62	97.7		68.4	54.2	75.8	66
LCTR-1040C	82.3	115.1	132.6	70.8	111.6		78.1	61.9	86.7	75.4
LCTR-1040D	90.6	126.6	145.8	77.9	122.8		85.9	68.1	95.3	83
LCTR-1047B	86.4	119.1	136.5	75.2	116.2		81.2	65.3	90.1	79
LCTR-1047C	99.6	136.7	156.4	86.9	133.6		93.2	75.4	103.6	91
LCTR-1047D	109.4	150.1	171.7	95.5	146.8		102.4	82.8	113.8	99.9
LCTR-1052B	99.6	136.7	156.4	86.9	133.6		93.2	75.4	103.6	91
LCTR-1052C	109.4	150.1	171.7	95.5	146.8		102.4	82.8	113.8	99.9
LCTR-1052D	125.1	171.6	196.3	109.1	167.7		117.1	94.6	130	114.2
LCTR-1060B	113.4	156.4	179.3	98.5	152.5		106.6	85.6	118.3	103.6
LCTR-1060C	124.6	171.9	197	108.2	167.6		117.1	94.1	130	113.9
LCTR-1060D	142.4	196.5	225.3	123.7	191.7		133.9	107.6	148.6	130.2
LCTR-1077B	141	194.1	222.2	122.8	189.5		132.3	106.6	146.9	128.8
LCTR-1077C	161.2	221.8	254	140.3	216.6		151.2	121.9	167.9	147.3
LCTR-1077D	177.2	243.9	279.3	154.3	238.1		166.2	134	184.6	161.9
LCTR-1082B	149.5	207.1	237.7	129.6	201.6		140.9	112.8	156.4	136.8
LCTR-1082C	170.2	234.5	268.7	148	228.8		159.8	128.6	177.5	155.5
LCTR-1082D	187	257.7	295.3	162.6	251.5		175.6	141.3	195	170.9
LCTR-1090B	170.2	234.5	268.7	148	228.8		159.8	128.6	177.5	155.5
LCTR-1090C	187	257.7	295.3	162.6	251.5		175.6	141.3	195	170.9
LCTR-1090D	201.4	277.5	317.9	175.1	270.7		189.1	152.2	210	184
LCTR-1105B	199.4	272.9	311.8	174.4	267		186.3	151.1	206.9	182
LCTR-1105C	219.3	300	342.8	191.7	293.6		204.8	166.1	227.5	200.1
LCTR-1105D	236	322.9	368.9	206.3	316		220.4	178.7	244.8	215.3