

良機

1962創業

Cooling Tower

Series

V-LC

LIANG CHI INDUSTRY CO., LTD.

多功能冷却塔性能測試場
COOLING TOWER TEST LABORATORY

美國冷卻水塔協會基準
PER C.T.I.

Liang Chi Series V-LC cooling towers have been designed for counter flow type with Low Noise Motor and Centrifugal Fan. The compact design is suitable for Equipment Cooling, Industrial Process Cooling and Air Conditioning.



Thermal Performance certified by the Cooling Technology Institute (CTI) in accordance with CTI STD-201

Characteristics

International Standards

Series V-LC cooling towers have been designed according to the international standards featuring light weight structure, easy transport, easy hoisting and easy site installation.

Low Noise & Easy Maintenance

Series V-LC cooling tower use high tension V-belt reducers, which are correspond to the low noise centrifugal fans featuring silent operation and easy maintenance.

Light Weight, Smaller Footprint and Multi-Cell Installation

Comparing with other types of cooling tower, V-LC features lighter operational weight and smaller footprint. Also the combinative multi-cell structure is suitable for large cooling requirement and future expansion.

High Efficiency Non-Clog Distribution System

Water distribution system consists of spray header and branches with large orifice, non-clog nozzles to spray water evenly on the surface of fill to promote the best mixing of air and water.

High Efficient Fill

Unique design of vacuum-formed and chevron configuration type fill with ripple surface facilitates even spread and long duration of water drop and free of deposits and scales to get best heat transfer.

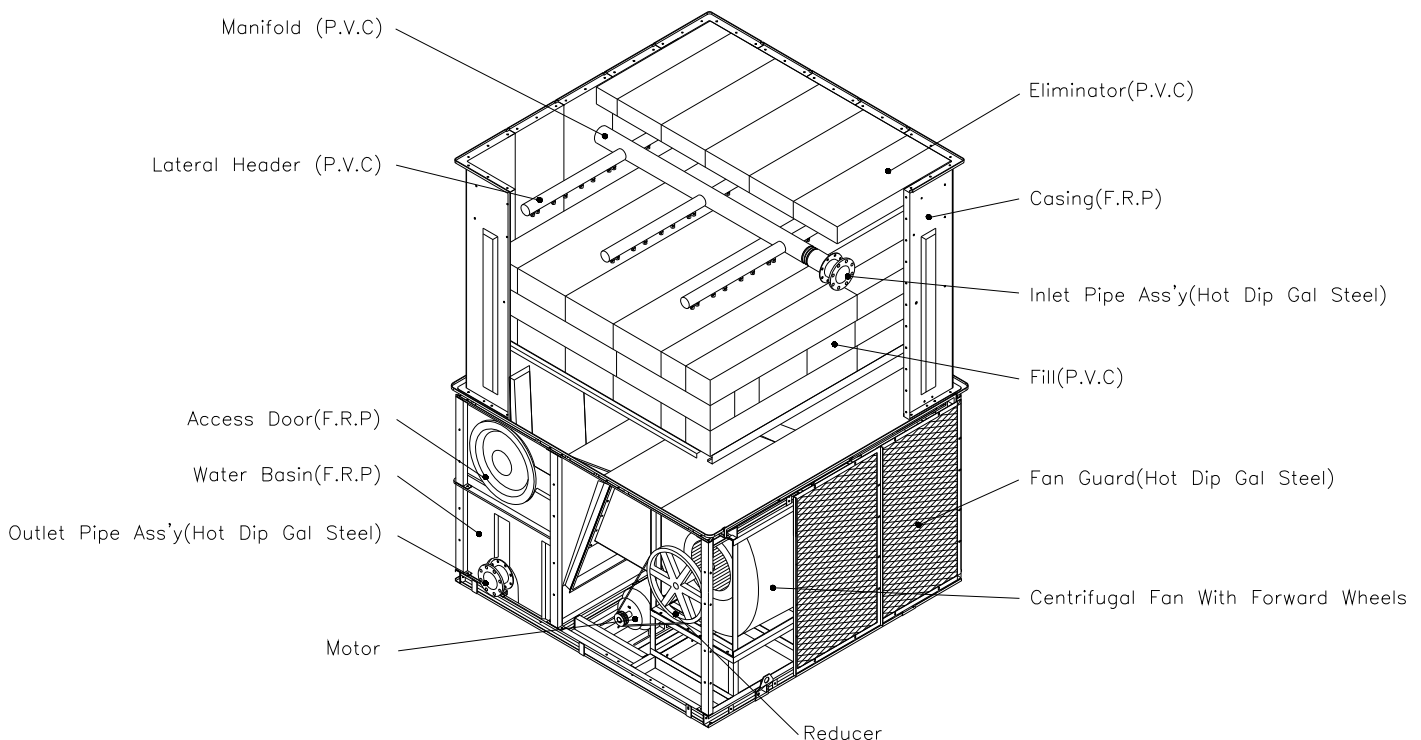
Application Flexibility

Unlike the ordinary design of individual application, series V-LC cooling tower with a certain size employs variable BHP rating of motors and RPM of fan covering 5 models which will meet the demanding requirements of applications.

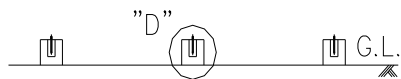
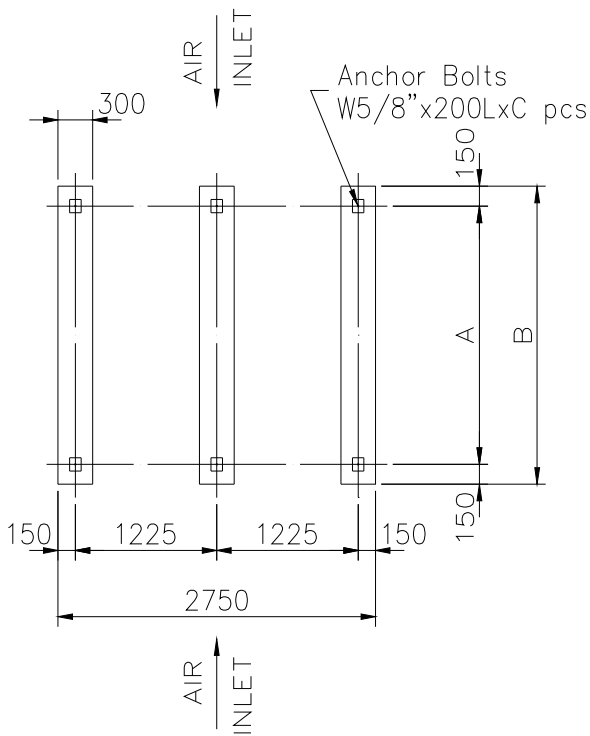
Long Service Life

V-LC tower components are made of weatherproof and anticorrosive materials. Casing is constructed of anti ultraviolet FRP which features soundproof and non-decayed merits with fine streamline outlook. Basin and access door are made by F.R.P. Fill and inlet louvers are by P.V.C. Supporting rack is made of light weight steel. All the steel parts are hot dip galvanized so as to prolong the service life.

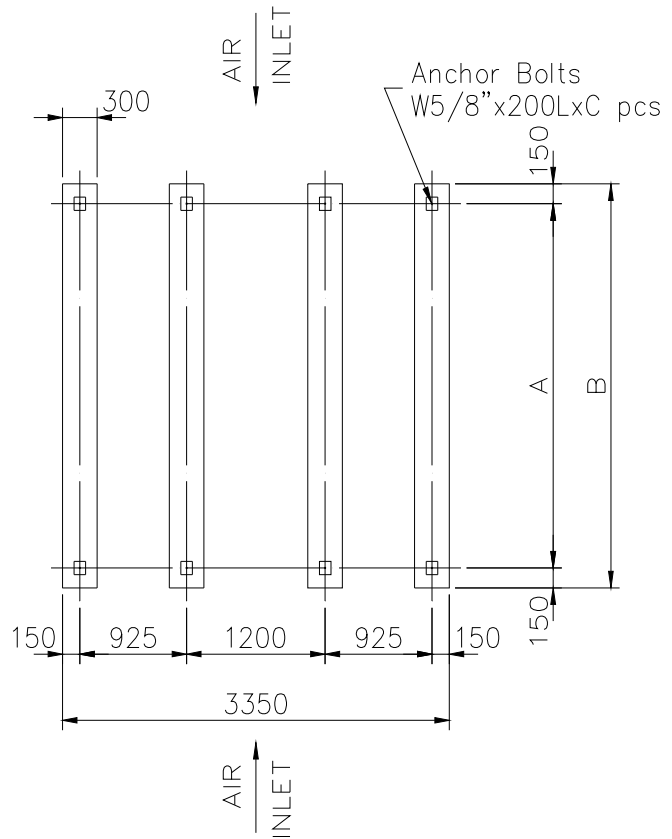
Structure and Standard Materials



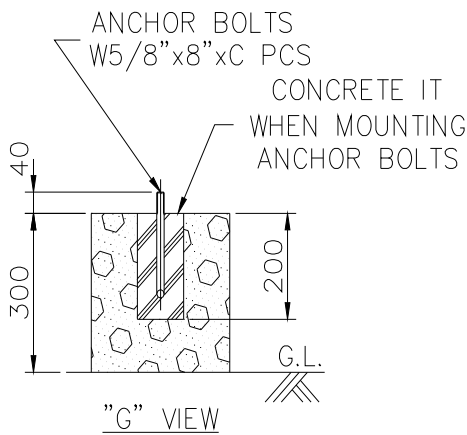
Recommended Concrete Foundations



V-LC-1008A~1017E



V-LC-1020A~1025E

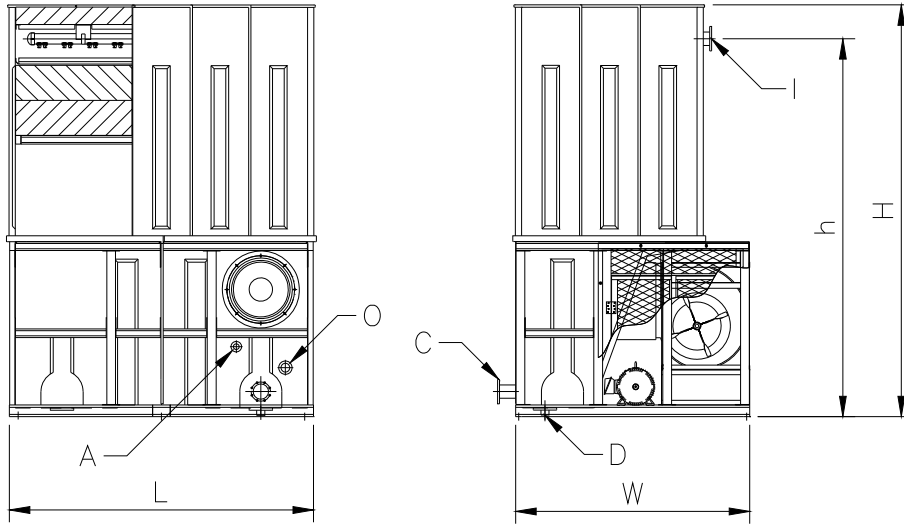
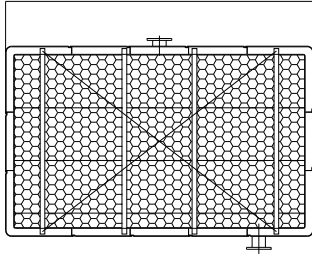


V-LC-ITEMS	1008A~1010E	1012A~1017E	1020A~1025E
A	1950	2550	2750
B	2250	2850	3050
C	6	6	8

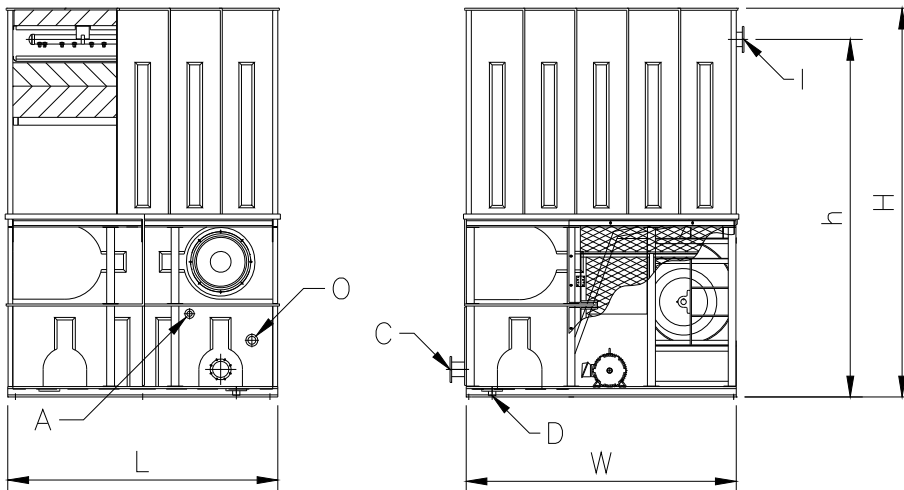
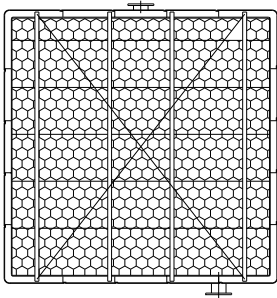
NOTES :

- 1.The anchor bolts are L type anchor bolts.
- 2.All concrete foundations must be level on the top.
- 3.The concrete foundations as shown are non-isolator type.For isolator type, please contact your local supplier or distributor.
- 4.Multiple cell models of the single cell models are also available but not showed. For more information, please contact your local supplier or distributor.
- 5.All dimensions are in millimeters.

Dimensions and Standard Specifications



V-LC-1008A~1010E



V-LC-1012A~1025E

Tower Model V-LC-	Nominal Ton*1	Nominal Water Flow (LPM)	Dimensions (mm)				Fan Dia. (mm)	Fan Motor (HP)
			Width	Length	Height			
			W	L	h	H		
1008A	56	728	2000	2600	3240	3530	500	3
1008B	70	910	2000	2600	3240	3530	500	5
1008C	81	1053	2000	2600	3240	3530	500	7.5
1008D	86	1118	2000	2600	3240	3530	500	10
1008E	94	1222	2000	2600	3240	3530	500	15
1010A	74	962	2000	2600	3240	3530	500	5
1010B	85	1105	2000	2600	3240	3530	500	7.5
1010C	95	1235	2000	2600	3240	3530	500	10
1010D	106	1378	2000	2600	3240	3530	500	15
1010E	115	1495	2000	2600	3240	3530	500	20
1012A	98	1274	2600	2600	3440	3740	560	5
1012B	109	1417	2600	2600	3440	3740	560	7.5
1012C	117	1521	2600	2600	3440	3740	560	10
1012D	130	1690	2600	2600	3440	3740	560	15
1012E	142	1846	2600	2600	3440	3740	560	20
1015A	112	1456	2600	2600	3440	3740	560	7.5
1015B	121	1573	2600	2600	3440	3740	560	10
1015C	144	1872	2600	2600	3440	3740	560	15
1015D	155	2015	2600	2600	3440	3740	560	20
1015E	161	2093	2600	2600	3440	3740	560	25
1017A	132	1716	2600	2600	3440	3740	560	10
1017B	145	1885	2600	2600	3440	3740	560	15
1017C	154	2002	2600	2600	3440	3740	560	20
1017D	163	2119	2600	2600	3440	3740	560	25
1017E	180	2340	2600	2600	3440	3740	560	30
1020A	136	1768	2800	3200	3805	4130	710	7.5
1020B	151	1963	2800	3200	3805	4130	710	10
1020C	175	2275	2800	3200	3805	4130	710	15
1020D	194	2522	2800	3200	3805	4130	710	20
1020E	224	2912	2800	3200	3805	4130	710	30
1022A	156	2028	2800	3200	3805	4130	710	10
1022B	180	2340	2800	3200	3805	4130	710	15
1022C	201	2613	2800	3200	3805	4130	710	20
1022D	231	3003	2800	3200	3805	4130	710	30
1022E	251	3263	2800	3200	3805	4130	710	40
1025A	180	2340	2800	3200	3805	4130	710	15
1025B	202	2626	2800	3200	3805	4130	710	20
1025C	241	3133	2800	3200	3805	4130	710	30
1025D	260	3380	2800	3200	3805	4130	710	40
1025E	271	3523	2800	3200	3805	4130	710	50

1. Nominal Tons are defined as the capacity that can deal with 13 lpm of water per ton, cooled from 37°C to 32°C with a 27°C entering wet bulb temperature.
2. Total pump head required for cooling water circulation pump is the sum of condenser water pressure drop, piping friction loss and tower head.
3. All dimensions are in millimeters. Weights are in kilograms.
4. Multiple cell models of the single cell models above are also available but not listed. For more information, please contact your local supplier or distributor.

Tower Model V-LC-	Pipe Connections					Approximate		Tower Head*2 (M)
	Inlet	Outlet	Drain	Over Flow	Auto Filler	Dry Wt. (kg)	Operating Wt. (kg)	
	(I)	(C)	(D)	(O)	(A)			
1008A	4B	4B	2B	2B	1B	1065	1845	6
1008B	4B	4B	2B	2B	1B	1075	1855	6
1008C	4B	4B	2B	2B	1B	1100	1880	6
1008D	4B	4B	2B	2B	1B	1110	1890	6
1008E	4B	4B	2B	2B	1B	1155	1935	6
1010A	5B	5B	2B	2B	1B	1090	1885	6
1010B	5B	5B	2B	2B	1B	1115	1910	6
1010C	5B	5B	2B	2B	1B	1125	1920	6
1010D	5B	5B	2B	2B	1B	1170	1965	6
1010E	5B	5B	2B	2B	1B	1190	1985	6
1012A	5B	5B	2B	2B	1B	1430	2885	6.2
1012B	5B	5B	2B	2B	1B	1455	2910	6.2
1012C	5B	5B	2B	2B	1B	1465	2920	6.2
1012D	5B	5B	2B	2B	1B	1510	2965	6.2
1012E	5B	5B	2B	2B	1B	1530	2985	6.2
1015A	6B	6B	2B	2B	1B	1490	2985	6.2
1015B	6B	6B	2B	2B	1B	1500	2995	6.2
1015C	6B	6B	2B	2B	1B	1545	3040	6.2
1015D	6B	6B	2B	2B	1B	1570	3060	6.2
1015E	6B	6B	2B	2B	1B	1605	3100	6.2
1017A	6B	6B	2B	2B	1B	1540	3070	6.2
1017B	6B	6B	2B	2B	1B	1585	3115	6.2
1017C	6B	6B	2B	2B	1B	1605	3135	6.2
1017D	6B	6B	2B	2B	1B	1645	3175	6.2
1017E	6B	6B	2B	2B	1B	1645	3175	6.2
1020A	8B	8B	2B	2B	1 1/4B	1795	3970	6.7
1020B	8B	8B	2B	2B	1 1/4B	1805	3980	6.7
1020C	8B	8B	2B	2B	1 1/4B	1850	4025	6.7
1020D	8B	8B	2B	2B	1 1/4B	1870	4050	6.7
1020E	8B	8B	2B	2B	1 1/4B	1910	4085	6.7
1022A	8B	8B	2B	2B	1 1/4B	1835	4035	6.7
1022B	8B	8B	2B	2B	1 1/4B	1880	4080	6.7
1022C	8B	8B	2B	2B	1 1/4B	1900	4100	6.7
1022D	8B	8B	2B	2B	1 1/4B	1940	4140	6.7
1022E	8B	8B	2B	2B	1 1/4B	1970	4170	6.7
1025A	8B	8B	2B	2B	1 1/4B	1935	4170	6.7
1025B	8B	8B	2B	2B	1 1/4B	1960	4190	6.7
1025C	8B	8B	2B	2B	1 1/4B	1995	4230	6.7
1025D	8B	8B	2B	2B	1 1/4B	2030	4265	6.7
1025E	8B	8B	2B	2B	1 1/4B	2130	4365	6.7

STD-201RS Table 3a - IP Units - Cooling Towers (CT)

Condition Reference #	1	2	3	4	5	6	7	8	9	10
Wet Bulb °F	50	50	50	50	50	55	55	55	55	55
Range °F	10	10	10	15	15	10	10	10	15	15
Approach °F	7	10	12	7	12	7	10	12	7	12
Inlet Water Temperature °F	67	70	72	72	77	72	75	77	77	82
Outlet Water Temperature °F	57	60	62	57	62	62	65	67	62	67
	GPM									
V-LC-1008A	76.7	100.4	117	62.3	91.9	84.8	110.9	129.3	68.9	101.8
V-LC-1008B	85.8	116.5	138.1	67.3	105.1	96.2	130.2	154.4	75.7	118.1
V-LC-1008C	102.7	137.8	162.4	81.5	125	114.7	153.5	181	91.2	139.8
V-LC-1008D	106.4	144	170.5	83.7	130.1	119.1	160.8	190.4	94	145.9
V-LC-1008E	119.2	160.2	189	94.4	145	133	178.3	210.5	105.6	162
V-LC-1010A	102.1	132.9	154.2	83.6	122.3	112.9	146.7	170.5	92.6	135.5
V-LC-1010B	108.5	145	170.5	86.6	132.1	121.2	161.5	190	96.9	147.8
V-LC-1010C	121.4	162.2	190.6	96.9	147.8	135.6	180.6	212.3	108.5	165.3
V-LC-1010D	137.1	182.4	214	109.9	166.5	152.9	202.8	238	122.8	185.9
V-LC-1010E	149	197.9	231.9	119.7	181.1	166.2	220.1	258	133.9	202.3
V-LC-1012A	101.7	146.5	178.7	75.2	129	116.5	166.8	203.3	86.6	147.8
V-LC-1012B	125.4	174.1	208.8	96.1	155.5	141.6	195.9	235	108.9	175.8
V-LC-1012C	116	169.8	208.9	84.3	148.6	133.7	194.4	238.8	97.8	171.2
V-LC-1012D	152.6	210.6	251.7	117.7	188.4	171.8	236.3	282.6	132.9	212.4
V-LC-1012E	177.1	239.6	283.6	139.2	215.9	197.9	267.1	316.3	155.9	241.7
V-LC-1015A	130	179.9	215.2	100	161.2	146.8	202.3	242	113.4	182.2
V-LC-1015B	133.4	188	226.9	100.7	167.2	151.7	212.7	256.5	115.1	190.3
V-LC-1015C	174.1	237.5	282.2	135.9	214	195.6	265.9	315.9	153.2	240.7
V-LC-1015D	190.8	258.6	306.3	149.8	233.6	213.8	289	342.4	168.4	262.2
V-LC-1015E	191	262.3	312.6	148.1	235.7	215	294.2	350.7	167.3	265.7
V-LC-1017A	147.3	206.7	248.7	111.7	184.5	167.4	233.7	280.9	127.7	209.9
V-LC-1017B	173.9	237.7	282.6	135.5	214.4	195.7	266.5	316.8	153.1	241.6
V-LC-1017C	174.5	243.5	292.2	133.1	217.9	198	274.8	329.5	151.9	247.5
V-LC-1017D	191.1	263.4	314.2	147.7	236.8	215.8	296	353.1	167.5	267.6
V-LC-1017E	229.5	306.7	360.4	183.1	279.7	256.4	341.7	401.6	205.3	313
V-LC-1020A	176.1	235.1	276.5	140.2	213.2	195.9	261.1	307.3	156.3	237.6
V-LC-1020B	192.4	258.3	304.6	152.4	233.7	214.5	287.3	339	170.3	260.9
V-LC-1020C	224.7	300.9	354.3	178.4	272.4	250.2	334.4	394.1	199	303.9
V-LC-1020D	243.5	328.5	388.3	192	296.6	271.9	366	432.9	214.9	331.8
V-LC-1020E	284.7	382.5	451.1	225.4	346	317.5	425.6	502.3	251.9	386.5
V-LC-1022A	199.9	267.6	315	158.9	242.7	222.8	297.6	350.5	177.5	270.9
V-LC-1022B	232.3	310.3	364.8	185.1	281.6	258.7	344.7	405.6	206.5	314.1
V-LC-1022C	255.5	342.9	404.2	202.5	310.6	285	381.6	450.1	226.5	347.1
V-LC-1022D	295	395.3	465.6	234.3	358.4	328.9	439.8	518.3	261.8	400.2
V-LC-1022E	327.4	435	510.2	262.3	396.3	364.2	483.1	566.9	292.5	441.8
V-LC-1025A	233.8	311.3	365.5	186.8	283.1	260.2	345.8	406.2	208.4	315.7
V-LC-1025B	258.4	345.8	407	205.5	313.9	288.1	384.7	453	229.8	350.7
V-LC-1025C	311	414.6	486.9	248.5	377.5	346.6	460.9	541.6	277.7	421.4
V-LC-1025D	335.6	446.8	524.3	268.6	407.6	374.2	497	583.4	300.3	455.2
V-LC-1025E	355	470.2	550.4	285.6	429.8	395	522.2	611.6	318.7	479.2

STD-201RS Table 3a - IP Units - Cooling Towers (CT)

Condition Reference #	11	12	13	14	15	16	17	18	19	20
Wet Bulb °F	60	60	60	60	60	65	65	65	65	65
Range °F	10	10	10	15	15	10	10	10	15	15
Approach °F	7	10	12	7	12	7	10	12	7	12
Inlet Water Temperature °F	77	80	82	82	87	82	85	87	87	92
Outlet Water Temperature °F	67	70	72	67	72	72	75	77	72	77
	GPM									
V-LC-1008A	93.9	123.3	143.8	76.5	85.5	104.7	160.6	160.6	85.5	127
V-LC-1008B	108	146.6	173.8	85.2	96.8	122.2	196.5	196.5	96.8	151.4
V-LC-1008C	128.2	172.1	203	102.3	115.6	144.5	228.7	228.7	115.6	177.8
V-LC-1008D	133.5	180.8	214.2	105.7	119.9	151	241.9	241.9	119.9	186.7
V-LC-1008E	148.6	199.9	236	118.3	133.5	167.4	265.8	265.8	133.5	205.8
V-LC-1010A	125	163.1	189.6	102.7	114.8	139.4	211.7	211.7	114.8	169.1
V-LC-1010B	135.5	181.1	213	108.8	122.9	152.7	239.8	239.8	122.9	187.9
V-LC-1010C	151.6	202.5	238.1	121.7	137.6	170.8	268	268	137.6	210.2
V-LC-1010D	170.6	227.1	266.5	137.6	155.2	192	299.7	299.7	155.2	235.7
V-LC-1010E	185.6	246.5	288.9	150.1	169.5	208.9	324.8	324.8	169.5	256.6
V-LC-1012A	133.5	191.3	232.9	99.9	116.3	154.4	267.8	267.8	116.3	197.5
V-LC-1012B	160.1	222.1	266.2	123.7	141.7	182.7	303	303	141.7	228.9
V-LC-1012C	154.1	224.2	274.8	113.6	133.2	179.4	317.5	317.5	133.2	231.5
V-LC-1012D	193.7	267.2	319.5	150.4	171.7	220.3	362.8	362.8	171.7	274.9
V-LC-1012E	221.4	299.9	355.3	175	197.9	249.8	400.8	400.8	197.9	308.1
V-LC-1015A	165.9	229.2	274	128.8	147.4	189.2	311.6	311.6	147.4	236.8
V-LC-1015B	172.6	242.4	292	131.8	152.1	198.2	333.7	333.7	152.1	250.7
V-LC-1015C	219.9	299.8	356.2	172.9	196.8	249.4	403.3	403.3	196.8	309.8
V-LC-1015D	239.9	325.2	385.3	189.7	215.3	271.4	435.4	435.4	215.3	336
V-LC-1015E	242.4	332.5	396.2	189.4	216.2	275.6	449.4	449.4	216.2	343.6
V-LC-1017A	190.5	266	319.4	146.3	168.8	218.6	364.5	364.5	168.8	276.2
V-LC-1017B	220.5	300.9	357.5	173.3	197.7	250.5	405.1	405.1	197.7	311.9
V-LC-1017C	224.8	312.3	374	173.5	199.9	257.5	426.2	426.2	199.9	324.3
V-LC-1017D	243.8	335.1	399.4	190.3	217.9	277.9	453.6	453.6	217.9	347.6
V-LC-1017E	286.8	383.2	450.5	230.5	260.8	323.5	507.3	507.3	260.8	398.4
V-LC-1020A	218.3	292	343.7	174.6	196.5	245.2	386.3	386.3	196.5	300.3
V-LC-1020B	239.4	321.9	379.9	190.6	215	269.5	427.7	427.7	215	331
V-LC-1020C	279	374.3	441.3	222.6	250.8	313.7	496.4	496.4	250.8	384.8
V-LC-1020D	304	410.7	485.9	241	272.4	342.9	547.9	547.9	272.4	422.5
V-LC-1020E	354.5	476.9	563.1	282.1	318.3	399.2	634	634	318.3	490.6
V-LC-1022A	248.6	333.2	392.6	198.6	224	279.7	441.8	441.8	224	343.4
V-LC-1022B	288.4	385.7	454	230.9	260.1	324.2	510.5	510.5	260.1	397.4
V-LC-1022C	318.3	427.8	504.7	253.7	286.5	358.5	568.4	568.4	286.5	440.9
V-LC-1022D	367.2	492.6	580.8	293.2	330.8	413.4	653.7	653.7	330.8	507.8
V-LC-1022E	405.8	540	634	326.9	368	455.8	712.1	712.1	368	558.1
V-LC-1025A	289.9	386.7	454.5	232.9	262.2	325.7	510.7	510.7	262.2	399
V-LC-1025B	321.7	431	507.7	257.3	290.4	362.2	571.4	571.4	290.4	445
V-LC-1025C	386.7	516	606.5	310.8	350.5	435.1	682.1	682.1	350.5	533.9
V-LC-1025D	417.7	556.5	653.4	336.5	379.7	470.1	735	735	379.7	577.4
V-LC-1025E	440.2	583.7	683.9	356.2	401.2	494.5	768	768	401.2	605.6

STD-201RS Table 3a - IP Units - Cooling Towers (CT)

Condition Reference #	21	22	23	24	25	26	27	28	29	30
Wet Bulb °F	70	70	70	70	70	75	75	75	75	75
Range °F	10	10	10	15	15	10	10	10	15	15
Approach °F	7	10	12	7	12	7	10	12	7	12
Inlet Water Temperature °F	87	90	92	92	97	92	95	97	97	102
Outlet Water Temperature °F	77	80	82	77	82	82	85	87	82	87
	GPM									
V-LC-1008A	117.1	154.1	180	95.7	142.3	131.4	172.4	201.9	107.4	160
V-LC-1008B	138.6	188.1	222.9	110.2	172.1	157.8	213	253	125.7	196.2
V-LC-1008C	163.1	219.2	258.5	130.9	201.3	184.9	247.4	292.5	148.6	228.5
V-LC-1008D	171	231.5	274.1	136.2	212	194.4	262	310.9	155.2	241.3
V-LC-1008E	188.9	254.4	300.4	151.1	232.9	214	287	339.9	171.4	264.3
V-LC-1010A	155.9	203.9	237.2	128.6	189.5	174.9	228.1	266.2	144.4	213
V-LC-1010B	172.4	230.4	270.9	139.3	212.7	195.3	259.9	306.3	158.2	241.3
V-LC-1010C	192.8	257.5	302.7	155.9	237.9	218.5	290.5	342.3	177	269.9
V-LC-1010D	216.4	288.1	338.1	175.6	266.4	244.8	324.5	381.8	199	301.8
V-LC-1010E	235.5	312.7	366.3	191.8	290	266.5	352.2	413.7	217.5	328.6
V-LC-1012A	178.8	254.7	308.8	135.6	229	207.8	293.4	356.2	158.3	266
V-LC-1012B	208.7	289	345.9	162.6	262.1	239.4	329.5	395.2	187.1	300.9
V-LC-1012C	209	301.5	367.7	156.4	269.9	244.2	348.9	425.7	183.9	315.1
V-LC-1012D	251	346	413.4	196.4	314	287.1	393.7	471.5	225.1	359.5
V-LC-1012E	282.4	382.9	453.7	224.4	349.2	320.5	432.7	514.3	254.9	396.8
V-LC-1015A	216	297.6	355.3	169.2	271	247.5	339	405.5	194.5	310.8
V-LC-1015B	227.8	318.4	382.5	176	288.6	262.8	364.5	438.5	203.9	333
V-LC-1015C	283.3	385.8	458	224.5	352.8	323	437.7	520.7	256.6	402.7
V-LC-1015D	307.6	416.8	493.6	245	381.8	350	471.9	560.2	279.3	434.9
V-LC-1015E	313.8	429.7	511.4	247.3	392.2	358.7	488.4	582.5	283.5	448.6
V-LC-1017A	251.1	348.6	417.1	195.3	317.6	289.4	398.5	477.3	226.2	366
V-LC-1017B	285	388.1	460.4	226	355.6	325.4	440.6	523.7	258.8	406.4
V-LC-1017C	295.2	407.9	486.9	230.7	372.4	339.6	465.6	556.6	266.6	428.4
V-LC-1017D	317.2	434.4	516.6	250	397.5	363.2	494.3	588.8	287.4	455.5
V-LC-1017E	365.4	487.8	573.1	295.8	451.2	414.2	550.4	648.1	336.1	512.1
V-LC-1020A	275.9	369.7	435.5	221.7	338.9	311.7	416.2	491.7	250.7	383.4
V-LC-1020B	303.8	409	483	243.1	374.3	343.9	461.3	546.2	275.5	424.3
V-LC-1020C	353.4	474.8	560.1	283.2	434.7	399.7	535	632.9	320.6	492.4
V-LC-1020D	387.4	523.8	619.8	308.7	478.6	439.4	591.6	702.1	350.6	543.6
V-LC-1020E	450.3	606.4	716.3	360.1	554.9	509.9	684.1	810.3	408.2	629.3
V-LC-1022A	315.3	423.1	498.7	253.3	388.2	356.8	476.9	563.7	286.9	439.9
V-LC-1022B	365.1	488.9	575.8	293.7	448.8	412.7	550.7	650.3	332.4	508.2
V-LC-1022C	404.6	544.1	642.2	324.2	498.8	458.3	613.9	726.5	367.7	565.9
V-LC-1022D	466.2	626	738.2	374.1	574.3	527.7	705.9	834.7	424.1	651.1
V-LC-1022E	512.9	683.3	802.4	415.2	629.7	579.3	768.9	905.4	469.6	712.4
V-LC-1025A	366.6	489.6	575.7	295.9	450.3	414.2	551.1	649.8	334.8	509.6
V-LC-1025B	408.4	547.6	645.2	328.5	503.2	462.4	617.5	729.4	372.4	570.5
V-LC-1025C	490.3	654.6	769.5	396.3	603.4	554.6	737.5	869.2	448.9	683.5
V-LC-1025D	530	706.2	829.2	429.6	652.7	599.8	795.8	936.7	487	739.6
V-LC-1025E	556.5	738.3	865.2	452.8	683.3	628.5	830.7	975.9	512.3	772.9

STD-201RS Table 3a - IP Units - Cooling Towers (CT)

Condition Reference #	31	32	33	34	35	36	37	38	39	40
Wet Bulb °F	80	80	80	80	80	85	85	85	85	85
Range °F	10	10	10	15	15	10	10	10	15	15
Approach °F	7	10	12	7	12	7	10	12	7	12
Inlet Water Temperature °F	97	100	102	102	107	102	105	107	107	112
Outlet Water Temperature °F	87	90	92	87	92	92	95	97	92	97
	GPM									
V-LC-1008A	147.6	193.9	226.6	120.9	179.9	165.9	218.6	255.6	136.1	203.3
V-LC-1008B	179.8	242.5	287.1	143.7	223.6	204.9	276.8	327.6	164.5	256.2
V-LC-1008C	209.8	280.6	330.8	169.1	259.4	238.2	319.2	376.2	192.7	296
V-LC-1008D	221.2	297.9	352.5	177.1	274.6	251.9	339.7	401.8	202.4	314.3
V-LC-1008E	242.7	325.5	384.4	194.9	299.9	275.5	370.2	437.2	221.9	342.2
V-LC-1010A	196.5	256.3	298.6	162.5	239.5	220.9	289	336.7	183.1	270.7
V-LC-1010B	221.6	294.6	346.2	180	273.9	251.5	334.8	393.3	205	312.4
V-LC-1010C	247.8	329.2	386.8	201.5	306.3	281.2	374.2	439.4	229.4	349.3
V-LC-1010D	277.3	367.3	431	226	341.9	314.2	417	489.1	257	389.5
V-LC-1010E	301.9	398.6	466.9	247.2	372.4	342.1	452.4	529.6	281.1	424.2
V-LC-1012A	241.6	339.6	410.1	185.2	308.7	280.6	393.9	474.4	216.7	360
V-LC-1012B	274.8	377.6	451.2	215.6	345.3	315.5	433.8	517.9	248.8	398.5
V-LC-1012C	285.4	405.5	491.9	216.5	367.4	333.2	472.2	571.1	254.8	430.4
V-LC-1012D	328.7	450.2	537.3	258.7	411.6	376.5	516.3	615.8	297.5	473.9
V-LC-1012E	364.2	491.6	582.6	290.4	451.1	414.1	560.2	663.8	331.1	515.7
V-LC-1015A	283.9	388.1	462.3	224.1	356.3	325.7	445.3	529.9	258.4	410.7
V-LC-1015B	303.3	419.3	502.2	236.6	383.9	350	483.5	577.9	274.7	444.9
V-LC-1015C	368.7	498.9	591.5	294	459.6	421	570.3	675.6	337	527.4
V-LC-1015D	398.6	536.9	635.4	319.1	495.4	454.2	612.7	724.5	365	567.3
V-LC-1015E	410.4	557.8	662.9	325.6	513.2	469.6	638.8	758.4	374.3	590.1
V-LC-1017A	333.6	457.6	545.5	262.4	421.4	384.3	526.6	626.4	304.4	487.5
V-LC-1017B	371.9	502.5	595.2	297.1	464.4	425.1	574.7	679.9	341.2	533.3
V-LC-1017C	390.7	533.9	635.3	308.6	492.4	449.4	613.5	728.5	357.3	568.8
V-LC-1017D	416.3	565	670.4	331.1	521.7	477	647.4	767.1	381.5	600.6
V-LC-1017E	470.1	623.9	732.5	382.7	581.3	533.6	709.2	832.2	436.2	663.3
V-LC-1020A	352.6	470.8	554.9	284.2	434	399.2	534.3	629.8	322.5	493.9
V-LC-1020B	389.9	522.8	617.5	312.9	481.1	442.1	594.3	702	355.8	548.6
V-LC-1020C	452.6	605.8	715	363.9	557.8	512.8	688.2	812.2	413.3	635.5
V-LC-1020D	499	671.7	794.9	399.1	617.5	567	764.9	905	454.8	705.5
V-LC-1020E	578.1	775.5	916.2	464	713.9	655.9	882	1041.8	527.8	814.3
V-LC-1022A	404.3	540.2	636.9	325.9	498.7	458.3	613.8	723.6	370.5	568.4
V-LC-1022B	467.2	623.3	734.3	377.1	575.5	529.1	707.7	833.6	428.3	655.3
V-LC-1022C	519.8	696.1	821.5	418.1	642.1	589.8	791.6	934.1	475.9	732.5
V-LC-1022D	598.2	799.9	943.5	481.9	738.3	678.4	909.3	1072.2	548.1	841.9
V-LC-1022E	655.1	869.4	1021.3	532.3	806.1	741.3	986	1158.1	603.9	917
V-LC-1025A	468.6	623.4	733.2	379.6	576.8	530.4	707.3	831.9	430.8	656.4
V-LC-1025B	524.1	699.6	824.3	423.2	646.9	594.4	795.1	936.6	481.4	737.6
V-LC-1025C	628.1	834.9	981.4	509.8	774.5	711.7	948	1114.1	579.4	882.2
V-LC-1025D	679.5	901	1057.6	553.3	838.2	770.1	1023	1200.4	629.3	955
V-LC-1025E	710.7	939	1100.4	580.8	874.5	804.1	1064.6	1247.3	659.1	994.6

STD-201RS Table 3a - IP Units - Cooling Towers (CT)

Condition Reference #	41	42	43	44	45		46	47	48	49
Wet Bulb °F	90	90	90	90	90		69.8	78	80.6	82.4
Range °F	10	10	10	15	15		9	10	9	9
Approach °F	7	10	12	7	12		10.8	7	9	7.2
Inlet Water Temperature °F	107	110	112	112	117		89.6	95	98.6	98.6
Outlet Water Temperature °F	97	100	102	97	102		80.6	85	89.6	89.6
	GPM									
V-LC-1008A	187.2	247	288.9	153.9	229.9		174.5	140.5	192.3	168.8
V-LC-1008B	234.3	316.5	374.3	188.8	293.5		215.4	170.1	240.4	208.6
V-LC-1008C	271.3	363.7	428.6	220.2	338		250.1	198.8	278.2	242.3
V-LC-1008D	287.7	388.1	458.8	232.1	359.8		265	209.4	295.4	256.4
V-LC-1008E	313.7	421.9	498.2	253.4	390.5		290.7	230	322.8	280.7
V-LC-1010A	249.1	326.4	380.4	206.9	306.1		229.9	187	254.1	224
V-LC-1010B	286.3	381.1	447.6	234.3	356.4		262	210	291.9	255.2
V-LC-1010C	320.1	425.9	499.9	262.2	398.5		292.8	234.9	326.3	285.4
V-LC-1010D	357.1	474.1	555.9	293.1	443.7		327	263	364	318.8
V-LC-1010E	388.8	514.2	601.7	320.7	483.2		354.3	286.3	395	346.6
V-LC-1012A	326.7	457.1	549.3	254.3	419.5		297.5	226.6	336.6	286.6
V-LC-1012B	363.4	499.2	595.3	288	459.7		333.9	259.1	374.4	322
V-LC-1012C	389.8	550	663.3	300.8	503.6		353.8	267.1	401.8	340.6
V-LC-1012D	432.6	593.1	706.9	343.3	545.6		399.3	310.3	446.5	384.4
V-LC-1012E	472.3	639.5	757.8	378.9	589.6		439	344.9	487.7	422.5
V-LC-1015A	374.7	511.7	608.2	298.8	473.3		343	267.9	384.7	331.8
V-LC-1015B	404.8	557.9	665.7	319.9	515.1		368.8	285.4	415.6	356.7
V-LC-1015C	482.1	652.8	772.9	387.7	605.2		442.6	348.6	494.6	428.6
V-LC-1015D	519.1	700.1	827.6	418.9	649.8		477.2	377.2	532.3	462.2
V-LC-1015E	538.9	732.5	868.9	431.7	678.5		494	387.6	552.9	478.2
V-LC-1017A	443.9	606.3	719.9	354.1	563.5		402.2	314.1	453.3	390.9
V-LC-1017B	487.2	658	777.8	393.1	612.4		444.7	351.4	498	432.1
V-LC-1017C	518.2	705.5	836.3	414.9	656.5		469.7	368.2	528.9	456.9
V-LC-1017D	548.1	742.6	878.8	440.9	691.1		498.8	392.9	559.8	484.9
V-LC-1017E	607.6	807.3	946.9	498.7	756.8		554.1	445.5	618.2	541.1
V-LC-1020A	453.3	607.5	716.1	367.2	562.3		421.7	334.6	467.1	406.8
V-LC-1020B	503.1	676.9	799.5	406.1	625.8		467.5	369.6	518.6	450.7
V-LC-1020C	583	783.2	924.3	471.2	724.2		542.3	429.3	601	522.8
V-LC-1020D	646.4	872.6	1032.4	520.1	806.1		599.7	472.7	666.3	578.1
V-LC-1020E	746.6	1004.8	1186.9	602.6	929.2		693.2	548	769.3	668.6
V-LC-1022A	521.2	698.7	823.6	422.6	648		482.7	383.3	535.8	466.6
V-LC-1022B	601.2	804.8	948.1	488	746.5		557.4	443.2	618.2	538.8
V-LC-1022C	671.5	901.8	1064.1	543.5	835.9		621.4	492.6	690.3	600.6
V-LC-1022D	771.9	1035.3	1220.8	625.6	960.2		714.4	567.1	793.4	690.8
V-LC-1022E	841.5	1120.2	1315.8	687.6	1043.5		776.8	621.7	862	753.6
V-LC-1025A	602.3	803.9	945.6	490.6	747.3		557.3	444.6	618.2	539.6
V-LC-1025B	676.2	905.2	1066.1	549.5	841.2		624.3	496.9	693.8	604.7
V-LC-1025C	809	1078.1	1266.9	660.8	1005.2		744.6	595.7	827.7	723.2
V-LC-1025D	875.5	1163.3	1364.8	717.9	1088.2		802.2	644.4	893	781.5
V-LC-1025E	912.6	1208.9	1416.3	750.5	1131.6		837.3	674.5	930.7	815.9

STD-201RS Table 3b - SI Units - Cooling Towers (CT)

Condition Reference #	1	2	3	4	5	6	7	8	9	10
Wet Bulb °C	10	10	10	10	10	13	13	13	13	13
Range °C	6	6	6	8	8	6	6	6	8	8
Approach °C	4	6	7	4	7	4	6	7	4	7
Inlet Water Temperature °C	20	22	23	22	25	23	25	26	25	28
Outlet Water Temperature °C	14	16	17	14	17	17	19	20	17	20
	L/S									
V-LC-1008A	4.7	6.4	7.3	4.1	6.2	5.3	7.2	8.2	4.6	6.9
V-LC-1008B	5.3	7.5	8.6	4.4	7.1	6	8.5	9.8	5	8.1
V-LC-1008C	6.3	8.8	10.2	5.4	8.4	7.1	10	11.5	6.1	9.5
V-LC-1008D	6.5	9.2	10.7	5.5	8.8	7.4	10.4	12.1	6.2	10
V-LC-1008E	7.3	10.3	11.8	6.2	9.8	8.3	11.6	13.3	7	11.1
V-LC-1010A	6.3	8.5	9.7	5.5	8.2	7	9.5	10.8	6.1	9.2
V-LC-1010B	6.7	9.3	10.7	5.7	8.9	7.5	10.5	12	6.4	10.1
V-LC-1010C	7.5	10.4	11.9	6.4	10	8.4	11.7	13.5	7.2	11.3
V-LC-1010D	8.4	11.7	13.4	7.2	11.2	9.5	13.2	15.1	8.1	12.7
V-LC-1010E	9.2	12.7	14.5	7.9	12.2	10.3	14.3	16.4	8.9	13.8
V-LC-1012A	6.2	9.4	11.2	5	8.8	7.2	10.9	12.9	5.8	10.3
V-LC-1012B	7.7	11.2	13	6.4	10.6	8.8	12.7	14.9	7.3	12.1
V-LC-1012C	7.1	10.9	13	5.6	10.2	8.2	12.7	15.1	6.6	11.9
V-LC-1012D	9.3	13.5	15.7	7.8	12.8	10.6	15.4	17.9	8.9	14.6
V-LC-1012E	10.9	15.3	17.7	9.2	14.6	12.3	17.3	20	10.4	16.5
V-LC-1015A	8	11.5	13.5	6.6	11	9.1	13.2	15.3	7.6	12.5
V-LC-1015B	8.2	12.1	14.2	6.7	11.4	9.4	13.8	16.2	7.7	13.1
V-LC-1015C	10.7	15.2	17.6	9	14.5	12.1	17.3	20	10.2	16.5
V-LC-1015D	11.7	16.6	19.2	9.9	15.8	13.3	18.8	21.7	11.2	17.9
V-LC-1015E	11.7	16.8	19.5	9.8	16	13.3	19.1	22.2	11.2	18.2
V-LC-1017A	9	13.3	15.5	7.4	12.6	10.4	15.2	17.8	8.6	14.5
V-LC-1017B	10.7	15.2	17.7	8.9	14.5	12.1	17.3	20.1	10.2	16.6
V-LC-1017C	10.7	15.6	18.3	8.8	14.8	12.3	17.9	20.9	10.2	17
V-LC-1017D	11.7	16.9	19.6	9.8	16.1	13.4	19.2	22.4	11.2	18.4
V-LC-1017E	14.1	19.7	22.6	12	18.8	15.9	22.2	25.5	13.6	21.3
V-LC-1020A	10.8	15.1	17.3	9.2	14.4	12.2	16.9	19.4	10.4	16.2
V-LC-1020B	11.8	16.5	19	10	15.8	13.3	18.6	21.5	11.3	17.8
V-LC-1020C	13.8	19.3	22.2	11.7	18.4	15.5	21.7	24.9	13.2	20.7
V-LC-1020D	15	21	24.3	12.6	20	16.9	23.7	27.4	14.3	22.7
V-LC-1020E	17.5	24.5	28.2	14.8	23.4	19.7	27.6	31.8	16.7	26.4
V-LC-1022A	12.3	17.1	19.7	10.4	16.4	13.8	19.3	22.2	11.8	18.5
V-LC-1022B	14.3	19.9	22.8	12.2	19	16.1	22.3	25.7	13.7	21.4
V-LC-1022C	15.7	22	25.3	13.3	21	17.7	24.7	28.5	15	23.7
V-LC-1022D	18.1	25.3	29.1	15.4	24.2	20.4	28.5	32.8	17.4	27.3
V-LC-1022E	20.1	27.9	31.9	17.2	26.7	22.6	31.3	35.9	19.4	30.1
V-LC-1025A	14.4	19.9	22.9	12.3	19.1	16.2	22.4	25.7	13.8	21.5
V-LC-1025B	15.9	22.2	25.5	13.5	21.2	17.9	24.9	28.7	15.2	23.9
V-LC-1025C	19.1	26.6	30.5	16.3	25.4	21.5	29.9	34.3	18.4	28.7
V-LC-1025D	20.7	28.6	32.8	17.6	27.4	23.2	32.2	37	19.9	31
V-LC-1025E	21.9	30.1	34.5	18.7	28.9	24.6	33.9	38.8	21.1	32.6

STD-201RS Table 3b - SI Units - Cooling Towers (CT)

Condition Reference #	11	12	13	14	15	16	17	18	19	20
Wet Bulb °C	16	16	16	16	16	18	18	18	18	18
Range °C	6	6	6	8	8	6	6	6	8	8
Approach °C	4	6	7	4	7	4	6	7	4	7
Inlet Water Temperature °C	26	28	29	28	31	28	30	31	30	33
Outlet Water Temperature °C	20	22	23	20	23	22	24	25	22	25
	L/S									
V-LC-1008A	5.9	8.1	9.2	5.1	7.8	6.4	8.7	9.9	5.5	8.4
V-LC-1008B	6.8	9.6	11.1	5.7	9.2	7.4	10.5	12.1	6.3	10.1
V-LC-1008C	8.1	11.3	13	6.9	10.8	8.8	12.3	14.2	7.5	11.8
V-LC-1008D	8.4	11.9	13.7	7.1	11.4	9.2	12.9	15	7.8	12.4
V-LC-1008E	9.3	13.1	15.1	7.9	12.6	10.2	14.3	16.4	8.7	13.7
V-LC-1010A	7.9	10.7	12.1	6.8	10.3	8.5	11.5	13.1	7.4	11.2
V-LC-1010B	8.5	11.9	13.6	7.3	11.4	9.3	12.9	14.8	8	12.5
V-LC-1010C	9.5	13.3	15.2	8.2	12.8	10.4	14.5	16.6	8.9	13.9
V-LC-1010D	10.7	14.9	17.1	9.2	14.3	11.7	16.2	18.6	10	15.6
V-LC-1010E	11.7	16.2	18.5	10.1	15.6	12.7	17.6	20.1	11	17
V-LC-1012A	8.4	12.6	14.9	6.8	12	9.3	14	16.5	7.6	13.3
V-LC-1012B	10.1	14.6	17	8.4	13.9	11	16	18.7	9.2	15.3
V-LC-1012C	9.7	14.8	17.6	7.8	14	10.8	16.4	19.5	8.7	15.6
V-LC-1012D	12.2	17.5	20.4	10.2	16.7	13.3	19.2	22.4	11.2	18.4
V-LC-1012E	13.9	19.7	22.7	11.8	18.8	15.2	21.4	24.8	12.8	20.5
V-LC-1015A	10.4	15.1	17.5	8.7	14.4	11.4	16.5	19.2	9.6	15.8
V-LC-1015B	10.8	16	18.7	9	15.2	12	17.6	20.6	9.9	16.8
V-LC-1015C	13.8	19.7	22.8	11.7	18.8	15.1	21.5	24.9	12.8	20.6
V-LC-1015D	15.1	21.3	24.7	12.8	20.5	16.5	23.3	26.9	14	22.4
V-LC-1015E	15.2	21.8	25.4	12.8	20.9	16.7	23.9	27.8	14	22.9
V-LC-1017A	12	17.5	20.5	9.9	16.7	13.2	19.3	22.5	11	18.5
V-LC-1017B	13.9	19.8	22.9	11.7	19	15.2	21.6	25	12.8	20.8
V-LC-1017C	14.1	20.5	24	11.8	19.7	15.6	22.6	26.3	13	21.7
V-LC-1017D	15.3	22	25.6	12.9	21.1	16.8	24.1	28	14.2	23.2
V-LC-1017E	18.1	25.1	28.8	15.5	24.2	19.7	27.4	31.4	16.9	26.4
V-LC-1020A	13.7	19.1	22	11.7	18.3	14.9	20.8	23.9	12.7	20
V-LC-1020B	15	21.1	24.3	12.8	20.2	16.4	22.9	26.4	13.9	22
V-LC-1020C	17.5	24.5	28.2	14.9	23.5	19.1	26.7	30.7	16.3	25.6
V-LC-1020D	19.1	26.9	31.1	16.2	25.8	20.8	29.3	33.9	17.7	28.1
V-LC-1020E	22.3	31.2	36	18.9	29.9	24.2	34	39.2	20.6	32.6
V-LC-1022A	15.6	21.8	25.1	13.3	20.9	17	23.7	27.3	14.5	22.8
V-LC-1022B	18.1	25.3	29	15.5	24.2	19.7	27.5	31.6	16.9	26.4
V-LC-1022C	20	28	32.3	17	26.9	21.8	30.5	35.2	18.6	29.3
V-LC-1022D	23.1	32.3	37.1	19.7	31	25.1	35.1	40.4	21.4	33.8
V-LC-1022E	25.5	35.4	40.6	21.9	34	27.7	38.4	44.1	23.8	37
V-LC-1025A	18.2	25.3	29.1	15.6	24.3	19.8	27.5	31.6	17	26.5
V-LC-1025B	20.2	28.2	32.5	17.3	27.1	22	30.7	35.4	18.8	29.6
V-LC-1025C	24.3	33.8	38.8	20.8	32.5	26.5	36.8	42.2	22.7	35.4
V-LC-1025D	26.3	36.5	41.8	22.6	35.1	28.6	39.7	45.5	24.6	38.3
V-LC-1025E	27.7	38.2	43.8	23.9	36.9	30.1	41.5	47.6	26	40.1

STD-201RS Table 3b - SI Units - Cooling Towers (CT)

Condition Reference #	21	22	23	24	25	26	27	28	29	30
Wet Bulb °C	21	21	21	21	21	24	24	24	24	24
Range °C	6	6	6	8	8	6	6	6	8	8
Approach °C	4	6	7	4	7	4	6	7	4	7
Inlet Water Temperature °C	31	33	34	33	36	34	36	37	36	39
Outlet Water Temperature °C	25	27	28	25	28	28	30	31	28	31
	L/S									
V-LC-1008A	7.2	9.8	11.2	6.2	9.5	8.1	11.1	12.7	7.1	10.8
V-LC-1008B	8.5	12	13.9	7.2	11.6	9.8	13.8	16	8.3	13.3
V-LC-1008C	10	14	16.1	8.6	13.5	11.5	16	18.4	9.8	15.5
V-LC-1008D	10.5	14.8	17.1	8.9	14.2	12	17	19.6	10.3	16.4
V-LC-1008E	11.6	16.3	18.7	9.9	15.6	13.2	18.6	21.4	11.3	17.9
V-LC-1010A	9.6	13	14.8	8.4	12.6	10.9	14.7	16.8	9.5	14.3
V-LC-1010B	10.6	14.7	16.9	9.1	14.2	12.1	16.8	19.3	10.4	16.3
V-LC-1010C	11.8	16.5	18.9	10.2	15.9	13.5	18.8	21.6	11.7	18.3
V-LC-1010D	13.3	18.4	21.1	11.5	17.8	15.2	21	24.1	13.1	20.4
V-LC-1010E	14.5	20	22.9	12.5	19.4	16.5	22.8	26.1	14.3	22.2
V-LC-1012A	10.9	16.3	19.2	8.9	15.6	12.8	19.1	22.4	10.6	18.3
V-LC-1012B	12.8	18.5	21.6	10.7	17.7	14.8	21.4	24.9	12.4	20.5
V-LC-1012C	12.7	19.3	22.9	10.3	18.4	15	22.7	26.8	12.3	21.7
V-LC-1012D	15.4	22.1	25.8	12.9	21.2	17.7	25.5	29.7	14.9	24.5
V-LC-1012E	17.3	24.5	28.3	14.7	23.5	19.8	28	32.4	16.9	27
V-LC-1015A	13.2	19	22.2	11.1	18.3	15.3	22	25.6	12.9	21.2
V-LC-1015B	13.9	20.4	23.8	11.6	19.5	16.2	23.7	27.7	13.6	22.8
V-LC-1015C	17.4	24.7	28.6	14.7	23.7	20	28.4	32.8	17	27.4
V-LC-1015D	18.9	26.6	30.8	16	25.7	21.7	30.6	35.3	18.5	29.5
V-LC-1015E	19.2	27.5	31.9	16.2	26.4	22.2	31.7	36.7	18.8	30.5
V-LC-1017A	15.4	22.3	26	12.8	21.4	17.9	25.9	30.1	15	25
V-LC-1017B	17.5	24.8	28.7	14.8	23.9	20.1	28.6	33	17.1	27.6
V-LC-1017C	18.1	26.1	30.4	15.2	25.1	21	30.2	35.1	17.7	29.2
V-LC-1017D	19.4	27.8	32.2	16.4	26.8	22.5	32.1	37.2	19	31
V-LC-1017E	22.5	31.2	35.8	19.3	30.2	25.7	35.6	40.9	22.2	34.6
V-LC-1020A	16.9	23.6	27.2	14.5	22.7	19.3	26.9	31	16.5	26
V-LC-1020B	18.6	26.1	30.1	15.9	25.1	21.3	29.9	34.4	18.2	28.8
V-LC-1020C	21.7	30.3	34.9	18.5	29.2	24.7	34.6	39.9	21.2	33.4
V-LC-1020D	23.7	33.5	38.7	20.2	32.2	27.2	38.3	44.2	23.2	36.9
V-LC-1020E	27.6	38.7	44.7	23.6	37.3	31.6	44.3	51.1	27	42.7
V-LC-1022A	19.3	27	31.1	16.6	26	22.1	30.9	35.5	18.9	29.8
V-LC-1022B	22.4	31.2	35.9	19.2	30.1	25.6	35.6	41	21.9	34.4
V-LC-1022C	24.8	34.8	40.1	21.2	33.5	28.4	39.7	45.8	24.3	38.4
V-LC-1022D	28.6	40	46.1	24.5	38.5	32.7	45.7	52.6	28	44.1
V-LC-1022E	31.5	43.7	50.1	27.1	42.2	35.9	49.8	57.1	30.9	48.2
V-LC-1025A	22.5	31.3	35.9	19.3	30.2	25.7	35.7	41	22.1	34.5
V-LC-1025B	25.1	35	40.3	21.5	33.7	28.6	40	46	24.6	38.6
V-LC-1025C	30.1	41.8	48	25.9	40.4	34.4	47.7	54.8	29.6	46.2
V-LC-1025D	32.6	45.1	51.8	28	43.7	37.2	51.5	59.1	32.1	50
V-LC-1025E	34.2	47.2	54.1	29.5	45.7	39	53.8	61.6	33.7	52.2

STD-201RS Table 3b - SI Units - Cooling Towers (CT)

Condition Reference #	31	32	33	34	35	36	37	38	39	40
Wet Bulb °C	27	27	27	27	27	29	29	29	29	29
Range °C	6	6	6	8	8	6	6	6	8	8
Approach °C	4	6	7	4	7	4	6	7	4	7
Inlet Water Temperature °C	37	39	40	39	42	39	41	42	41	44
Outlet Water Temperature °C	31	33	34	31	34	33	35	36	33	36
	L/S									
V-LC-1008A	9.2	12.7	14.5	8	12.3	10.1	13.8	15.8	8.7	13.4
V-LC-1008B	11.3	15.9	18.4	9.6	15.4	12.4	17.5	20.2	10.6	16.9
V-LC-1008C	13.1	18.4	21.1	11.3	17.8	14.4	20.1	23.2	12.4	19.5
V-LC-1008D	13.8	19.5	22.5	11.8	18.9	15.2	21.4	24.7	13	20.8
V-LC-1008E	15.2	21.3	24.6	13	20.6	16.7	23.4	26.9	14.3	22.6
V-LC-1010A	12.3	16.7	19.1	10.8	16.3	13.4	18.2	20.8	11.7	17.8
V-LC-1010B	13.9	19.3	22.1	12	18.7	15.2	21.1	24.3	13.2	20.6
V-LC-1010C	15.5	21.5	24.7	13.4	21	17	23.6	27.1	14.7	23
V-LC-1010D	17.4	24	27.6	15	23.4	19	26.3	30.2	16.5	25.6
V-LC-1010E	18.9	26.1	29.9	16.4	25.4	20.7	28.6	32.7	18	27.9
V-LC-1012A	15.1	22.3	26.2	12.5	21.5	16.8	24.8	29.1	14	23.9
V-LC-1012B	17.2	24.8	28.8	14.5	23.9	19	27.4	31.8	16	26.4
V-LC-1012C	17.8	26.7	31.5	14.7	25.6	20	29.8	35	16.5	28.6
V-LC-1012D	20.5	29.5	34.3	17.3	28.4	22.7	32.6	37.9	19.2	31.4
V-LC-1012E	22.8	32.2	37.2	19.4	31	25	35.3	40.9	21.3	34.1
V-LC-1015A	17.8	25.5	29.6	15	24.6	19.6	28.1	32.6	16.7	27.2
V-LC-1015B	19	27.5	32.1	15.9	26.6	21.1	30.5	35.5	17.7	29.5
V-LC-1015C	23.1	32.7	37.8	19.7	31.6	25.4	36	41.6	21.7	34.9
V-LC-1015D	24.9	35.2	40.6	21.3	34	27.4	38.6	44.6	23.5	37.5
V-LC-1015E	25.7	36.6	42.4	21.8	35.3	28.3	40.3	46.7	24.1	39
V-LC-1017A	20.9	30	34.9	17.6	29.1	23.2	33.2	38.6	19.6	32.2
V-LC-1017B	23.3	32.9	38.1	19.9	31.9	25.7	36.3	41.9	22	35.2
V-LC-1017C	24.5	35	40.7	20.7	34	27.1	38.7	44.9	23	37.6
V-LC-1017D	26.1	37.1	42.9	22.2	35.9	28.8	40.8	47.3	24.6	39.7
V-LC-1017E	29.5	40.8	46.9	25.5	39.8	32.3	44.8	51.4	28	43.7
V-LC-1020A	22.1	30.8	35.4	18.9	29.7	24.2	33.7	38.8	20.8	32.6
V-LC-1020B	24.4	34.2	39.4	20.9	33	26.7	37.5	43.2	22.9	36.2
V-LC-1020C	28.3	39.6	45.7	24.3	38.3	31	43.4	50	26.6	42
V-LC-1020D	31.2	44	50.8	26.6	42.4	34.3	48.2	55.7	29.3	46.6
V-LC-1020E	36.2	50.7	58.5	31	49	39.7	55.6	64.2	34	53.8
V-LC-1022A	25.3	35.3	40.7	21.7	34.2	27.7	38.7	44.6	23.8	37.5
V-LC-1022B	29.2	40.8	46.9	25.1	39.4	32	44.6	51.4	27.6	43.2
V-LC-1022C	32.5	45.5	52.5	27.9	44	35.7	49.9	57.5	30.6	48.4
V-LC-1022D	37.4	52.3	60.3	32.1	50.6	41	57.4	66.1	35.3	55.6
V-LC-1022E	41	56.8	65.3	35.4	55.1	44.9	62.2	71.4	38.8	60.4
V-LC-1025A	29.3	40.8	46.8	25.3	39.5	32.1	44.6	51.3	27.7	43.3
V-LC-1025B	32.8	45.8	52.7	28.2	44.3	36	50.2	57.7	31	48.7
V-LC-1025C	39.3	54.6	62.7	33.9	53	43.1	59.8	68.7	37.2	58.1
V-LC-1025D	42.6	58.9	67.6	36.8	57.3	46.7	64.6	74.1	40.4	62.9
V-LC-1025E	44.5	61.4	70.4	38.6	59.7	48.8	67.2	77	42.3	65.5

STD-201RS Table 3b - SI Units - Cooling Towers (CT)

Condition Reference #	41	42	43	44	45		46	47	48	49
Wet Bulb °C	32.2	32.2	32.2	32.2	32.2		21	25.56	27	28
Range °C	6	6	6	8	8		5	5.56	5	5
Approach °C	4	6	7	4	7		6	3.89	5	4
Inlet Water Temperature °C	42.2	44.2	45.2	44.2	47.2		32	35.00	37	37
Outlet Water Temperature °C	36.2	38.2	39.2	36.2	39.2		27	29.44	32	32
	L/S									
V-LC-1008A	11.6	15.9	18.1	10.1	15.4		11	8.9	12.1	10.6
V-LC-1008B	14.5	20.4	23.5	12.4	19.8		13.6	10.7	15.2	13.2
V-LC-1008C	16.7	23.4	26.9	14.4	22.7		15.8	12.5	17.6	15.3
V-LC-1008D	17.7	25	28.8	15.2	24.2		16.7	13.2	18.6	16.2
V-LC-1008E	19.3	27.1	31.3	16.6	26.3		18.3	14.5	20.4	17.7
V-LC-1010A	15.4	21	23.9	13.5	20.5		14.5	11.8	16	14.1
V-LC-1010B	17.7	24.5	28.1	15.3	23.9		16.5	13.3	18.4	16.1
V-LC-1010C	19.8	27.4	31.4	17.2	26.8		18.5	14.8	20.6	18
V-LC-1010D	22.1	30.5	34.9	19.2	29.8		20.6	16.6	23	20.1
V-LC-1010E	24	33.1	37.8	21	32.4		22.4	18.1	24.9	21.9
V-LC-1012A	20.1	29.4	34.5	16.8	28.5		18.8	14.3	21.2	18.1
V-LC-1012B	22.4	32.1	37.4	19	31.1		21.1	16.3	23.6	20.3
V-LC-1012C	23.9	35.4	41.6	19.9	34.2		22.3	16.9	25.4	21.5
V-LC-1012D	26.6	38.1	44.3	22.6	36.9		25.2	19.6	28.2	24.3
V-LC-1012E	29.1	41.1	47.5	24.9	39.8		27.7	21.8	30.8	26.7
V-LC-1015A	23.1	32.9	38.2	19.7	32		21.6	16.9	24.3	20.9
V-LC-1015B	24.9	35.9	41.8	21.1	34.9		23.3	18	26.2	22.5
V-LC-1015C	29.7	42	48.5	25.5	40.8		27.9	22	31.2	27
V-LC-1015D	32	45	52	27.5	43.8		30.1	23.8	33.6	29.2
V-LC-1015E	33.2	47.1	54.6	28.4	45.8		31.2	24.4	34.9	30.2
V-LC-1017A	27.4	39	45.2	23.3	38		25.4	19.8	28.6	24.7
V-LC-1017B	30.1	42.3	48.9	25.8	41.2		28.1	22.2	31.4	27.3
V-LC-1017C	32	45.4	52.6	27.3	44.3		29.6	23.2	33.4	28.8
V-LC-1017D	33.8	47.8	55.2	29	46.6		31.5	24.8	35.3	30.6
V-LC-1017E	37.6	51.9	59.5	32.6	50.8		35	28.1	39	34.1
V-LC-1020A	28	39	44.9	24.1	37.8		26.6	21.1	29.5	25.7
V-LC-1020B	31	43.5	50.2	26.6	42.1		29.5	23.3	32.7	28.4
V-LC-1020C	36	50.3	58	30.9	48.8		34.2	27.1	37.9	33
V-LC-1020D	39.8	56.1	64.8	34.1	54.3		37.8	29.8	42	36.5
V-LC-1020E	46	64.6	74.5	39.5	62.6		43.7	34.6	48.5	42.2
V-LC-1022A	32.2	44.9	51.7	27.7	43.6		30.4	24.2	33.8	29.4
V-LC-1022B	37.1	51.7	59.5	32	50.2		35.2	28	39	34
V-LC-1022C	41.4	58	66.8	35.6	56.3		39.2	31.1	43.6	37.9
V-LC-1022D	47.6	66.5	76.6	41	64.6		45.1	35.8	50.1	43.6
V-LC-1022E	52	72	82.6	45	70.1		49	39.2	54.4	47.5
V-LC-1025A	37.2	51.7	59.4	32.1	50.2		35.2	28.1	39	34
V-LC-1025B	41.7	58.2	66.9	36	56.6		39.4	31.3	43.8	38.2
V-LC-1025C	50	69.3	79.6	43.3	67.5		47	37.6	52.2	45.6
V-LC-1025D	54.1	74.8	85.8	47	73		50.6	40.7	56.3	49.3
V-LC-1025E	56.4	77.7	89	49.1	75.9		52.8	42.6	58.7	51.5